



**Arts
Infusion**

2024-2025

**PROGRAM AND
ACTIVITY GUIDE**

**FOR TEACHERS, STUDENTS,
AND COMMUNITY MEMBERS**

**PRESENTED BY
SALINA ARTS & HUMANITIES**

FOR NEEDED ACCOMMODATIONS,

please call Amanda Morris at Salina Arts & Humanities at 785-309-5770 between 8:00 a.m. - Noon and 1:00 p.m. - 5:00 p.m. Every effort will be made to accommodate known disabilities. For material or speech access, please call at least five working days prior to the event.

SALINA ARTS & HUMANITIES,

a department of the City of Salina, has served a unique role as an arts advocate and resource partner since 1966. The Smoky Hill River Festival, Horizons Grants Program, Smoky Hill Museum, Arts Infusion Program in schools, Community Art & Design, and Creative Connections are among the programs of Salina Arts & Humanities, located at 211 W. Iron Avenue in Salina.



Greater
Salina
Community
Foundation

The Greater Salina Community Foundation is an important community partner that provides the resources for many arts and cultural

programs in Salina. A variety of the programs and activities in this guide are supported in part through the Foundation and its donors. The Greater Salina Community Foundation is a collection of funds designed to link donors with charitable causes that meet the needs of the Saline County area and neighboring counties such as Cloud, McPherson, Russell, and Ellsworth. The Foundation aims to build a permanent endowment that facilitates prudent management and care of donor funds to enhance quality of life, both now and in the future.



TABLE OF Contents

Introduction	4
Program Overview	5
Teaching Artist Overview	6-7
Artists and Agencies	8-15
Drama, Movement, and Music	8-9
Social Studies	10
Visual Arts.....	11
Science.....	12-13
English Language Arts.....	14-15
Community Cultural Offerings	16
Salina Arts & Humanities Resources	17
Public Art in Salina, KS	18



Salina Public Schools and Salina Arts and Humanities have a longstanding partnership to bring rich arts experiences into SPS classrooms. Arts education is central to a well-rounded education. High quality arts instruction results in increased student engagement and academic gains. This year, artists will focus programming on the theme of **Creative Connections**.

In the coming months, your students will have the opportunity to engage with local and visiting artists to develop critical thinking skills and apply knowledge from multiple disciplines in innovative ways. This guide provides a description of what is available, but the descriptions provided are just the beginning. The artists are willing to work with the classroom teacher to customize the content.

ALL students benefit when we embed the arts in our schools and classrooms. Projects like this bring the joy to learning. I encourage you to make the time to include the Arts Infusion offerings as part of your instruction.

Linn Exline, Superintendent

Dear Teachers and Citizens,

You are blessed to live in a community where public and private entities believe in the power of the arts and humanities to change lives and build community. Arts Infusion and its partnership with USD 305 distinguishes Salina as a leader in arts integration throughout education.

The experiences offered through visiting and local teaching artists help develop students in important ways. Creative problem-solving, learning to adapt, working independently and in groups, improving multi-sensory communication skills, and building confidence and self-esteem are all benefits offered through creative practices.

Thanks to the school district and taxpayers, this guide is filled with opportunities to experience the transformative power of the arts. Engage with the artists and organizations featured in the guide and make wonderful creative connections that last a lifetime.

Sincerely,

Brad Anderson
Executive Director, Salina Arts & Humanities



PROGRAM OVERVIEW



HISTORY

Presenting the arts in schools has been the foundation of program activity for Salina Arts & Humanities (SAH) since 1966. Currently, Arts Infusion represents a much broader perspective in arts education, with resources extended throughout the district, and with secondary students targeted through artist residencies and opportunities to participate in the larger community's cultural environment.

OBJECTIVES

- Encourage involvement in the arts as a source of creative expression and personal fulfillment.
- Recruit, mentor, and employ Salina and area professionals as teaching artists in classrooms at all levels of instruction, grades Pre-K through 12.
- Involve secondary students; impacting them with master classes and workshops led by practicing artists.
- Support teachers and artists in learning methods of arts integration across curriculum.

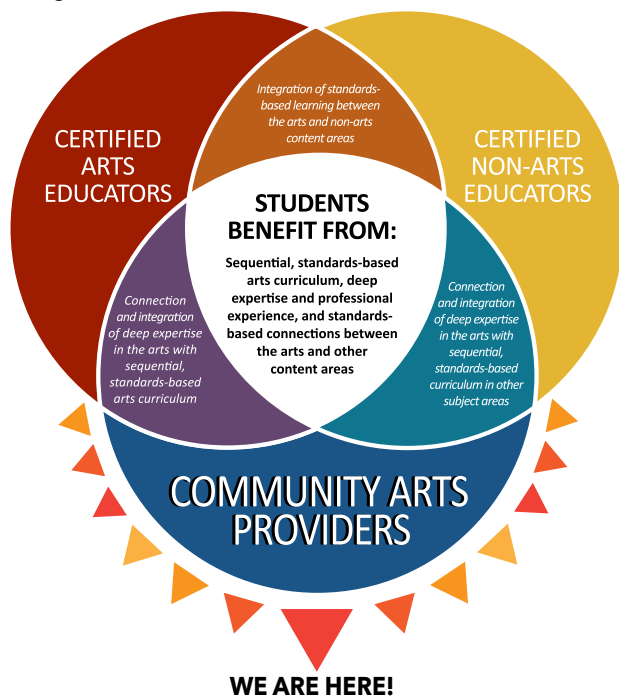
HOW IT WORKS

Visit salinaarts.com and navigate to the Education page to access the digital guide and online form to request an artist visit. Please note that once you have requested a Teaching Artist, you must be responsive to emails and phone calls regarding scheduling. **Final date for making priority requests is 8 am on Friday, August 30, 2024.** This only pertains to the Arts Infusion Program - not the other organizations in the Guide.

A request does not guarantee that the artists will visit your classroom. However, SAH and artists work hard to get as many sessions scheduled as possible.

Once the selection process is complete, local Teaching Artists will contact teachers individually after receiving a list of educator requests. Typically this happens in mid-September, with presentations beginning in September and concluding in May. However, if you have a need for an earlier presentation, please contact the SAH Arts Education Coordinator (sarah.keck@salina.org).

SAH and artists are open to a high level of customization and are available to assist in locating resources.



MAKE A REQUEST

- Find digital guide at www.salinaarts.com by navigating to the Education tab or email sah@salina.org
- Use the online form to request a session for your classroom
- First request deadline: Friday, August 30, 2024

HELP SCHEDULE PROGRAMS

- Be a great partner when contacted by a teaching artist or SAH
- Responsive emails and phone calls about scheduling make programs happen

ASK US!

- ASK US! We may be able to customize a program for you
- ASK US! We may be able to do an early September or spring program request
- Have a question, an idea for a program, a concern - let us know!

TEACHING ARTIST OVERVIEW

The Arts Infusion teaching artists have received training from a number of arts institutions (the John F. Kennedy Center for the Performing Arts, Kansas Department of Education) in making applications to English language arts, science, history, and more. Many local teaching artists have received Salina Arts & Humanities' Horizons Developing Artist grants to increase their knowledge of how to implement their artistry in appropriate ways.

Some sessions include optional pre- and post-activities for the teacher to use. Additional details about each session are available upon request. All lessons approximately 45 minutes unless otherwise specified.

- **Artists by Subject**
- **Artists by Grade**
- **Artists by Format**

ARTS EDUCATION - *A Shared Endeavor*

We are fortunate to have strong support of the arts in the classroom and talented arts educators working hard in our schools. Through Arts Infusion, classroom teachers have access to community organizations and teaching artists that provide standards-based arts learning experiences.

**When we work together,
ALL students benefit!**
#ArtsMatterSalina

VISITING ARTIST DATES

SALINA SYMPHONY -

PAUL DOOLEY, COMPOSER

- October 4, 2024

KYLE SAULNIER,
JAZZ PERFORMER/COMPOSER

- November 7-8, 2024

MARK KOSOWER, CELLO

- January 10, 2025

LUN LI, VIOLIN

- May 2, 2025

DINO O'DELL

- October 8-9, 2024
- Spring 2025 TBA

DRUM SAFARI

- October 15-16, 2024
- February 2025

THEATRE SALINA -

IRON STREET DANCE COMPANY

- October 24-25, 2024

STAGE DOOR 1

- March 27-28, 2025

TRACI BRIMHALL, POET LAUREATE OF KANSAS

- November 6 and 8, 2024
- April 15, 2025

PRISCILLA HOWE

- December 3-6, 2024
- January 29-31, 2025

BALLET SALINA

- December 9-10, 2024

Subject	Thad Beach	Ann Zimmerman	Lori Brack	Tia Westling	Darren Morawitz	Public Art in Salina	Ballet Salina	Traci Brimhall	Friends of the River	Priscilla Howe	Drum Safari	Dino O'Dell	Theatre Salina	Salina Symphony
Social-Emotional	Pg. 8, 10, 12, 14		Pg. 14	Pg. 11	Pg. 11	Pg. 10	Pg. 9	Pg. 14	Pg. 13	Pg. 15	Pg. 8	Pg. 10	Pg. 8, 9	
Dance/Movement				Pg. 11			Pg. 9				Pg. 8		Pg. 8	
Fine Arts					Pg. 11	Pg. 10	Pg. 9							Pg. 9
Fine Arts Career Pathways						Pg. 10								Pg. 9
Geography	Pg. 10, 12											Pg. 10		
Global Awareness												Pg. 10		
Health											Pg. 8		Pg. 8	
History	Pg. 10	Pg. 10					Pg. 9							
English Language Arts	Pg. 10, 14	Pg. 8, 10						Pg. 14		Pg. 15				
Math	Pg. 10, 12	Pg. 10												
Motor Skills	Pg. 8, 14			Pg. 11							Pg. 8			
Music	Pg. 8, 10, 12, 14	Pg. 8, 10					Pg. 9				Pg. 8			Pg. 9
Reading	Pg. 14		Pg. 14	Pg. 11				Pg. 14						
Science	Pg. 10, 12	Pg. 8, 10							Pg. 13			Pg. 13		
Social Studies	Pg. 10	Pg. 10							Pg. 13	Pg. 15		Pg. 10		
Speaking and Listening	Pg. 8, 10, 12, 14							Pg. 14	Pg. 13	Pg. 15		Pg. 10, 13	Pg. 9	
Visual Arts				Pg. 11	Pg. 11	Pg. 10								
Writing	Pg. 10	Pg. 8	Pg. 14					Pg. 14		Pg. 15				
Grade Level	Thad Beach	Ann Zimmerman	Lori Brack	Tia Westling	Darren Morawitz	Public Art in Salina	Ballet Salina	Traci Brimhall	Friends of the River	Priscilla Howe	Drum Safari	Dino O'Dell	Theatre Salina	Salina Symphony
Pre-K	Pg. 12, 14			Pg. 11					Pg. 13	Pg. 15	Pg. 8			
K	Pg. 12, 14	Pg. 10		Pg. 11					Pg. 13	Pg. 15	Pg. 8	Pg. 10, 13		
1	Pg. 12, 14	Pg. 10					Pg. 9		Pg. 13	Pg. 15	Pg. 8	Pg. 10, 13	Pg. 8, 9	
2	Pg. 12, 14	Pg. 10					Pg. 9		Pg. 13	Pg. 15	Pg. 8	Pg. 10, 13	Pg. 8, 9	
3	Pg. 8, 10, 12	Pg. 10				Pg. 10	Pg. 9		Pg. 13	Pg. 15	Pg. 8	Pg. 10, 13	Pg. 8, 9	
4	Pg. 8, 10, 12	Pg. 8, 10				Pg. 10	Pg. 9		Pg. 13	Pg. 15	Pg. 8	Pg. 13	Pg. 8, 9	
5	Pg. 8, 10, 12	Pg. 8, 10				Pg. 10	Pg. 9		Pg. 13	Pg. 15	Pg. 8	Pg. 13	Pg. 8, 9	
6	Pg. 10, 12	Pg. 8, 10	Pg. 14		Pg. 11	Pg. 10		Pg. 14		Pg. 15				Pg. 9
7	Pg. 10	Pg. 10	Pg. 14		Pg. 11	Pg. 10		Pg. 14		Pg. 15				Pg. 9
8		Pg. 10	Pg. 14		Pg. 11	Pg. 10		Pg. 14		Pg. 15				Pg. 9
High School			Pg. 14		Pg. 11	Pg. 10		Pg. 14		Pg. 15				Pg. 9
Format	Thad Beach	Ann Zimmerman	Lori Brack	Tia Westling	Darren Morawitz	Public Art in Salina	Ballet Salina	Traci Brimhall	Friends of the River	Priscilla Howe	Drum Safari	Dino O'Dell	Theatre Salina	Salina Symphony
In-class workshop	Pg. 8, 10, 12, 14	Pg. 8, 10	Pg. 14	Pg. 11	Pg. 11	Pg. 10		Pg. 14	Pg. 13	Pg. 15	Pg. 8	Pg. 10, 13	Pg. 8, 9	Pg. 9
Assembly - Over 50 students		Pg. 10					Pg. 9		Pg. 13	Pg. 15	Pg. 8	Pg. 10, 13	Pg. 8, 9	
Residency - Multiple visits to same class	Pg. 8, 10	Pg. 8	Pg. 14	Pg. 11										

DRUM SAFARI

Visiting Artist

October 15-16, 2024 • February 2025



SAMBA WALK

Target Grades: Pre-K - 3

Time: 30-45 minutes • **Capacity:** 300

Curricular Connections: Health (dance, movement), character development (self-awareness, social awareness), active participation, motor skills

Room Requirements: Students seated on floor, open space for movement, electricity
Students are invited to join a musical "safari" - they will be introduced to South American animals whose names are set to rhythm. After meeting the animals, each child is given a percussion instrument... and the jungle jam begins! As the rhythms of the animals lock together, an exciting sense of community begins to develop. This program includes interactive songs, dancing, and of course, DRUMMING!

SOUNDS OF THE SEA: CALMING RHYTHMS FOR FOCUS, BALANCE, AND CREATIVITY

Target Grades: K - 4

Time: 30-45 minutes • **Capacity:** 300

Curricular Connections: Health (dance, movement), character development (self-awareness, social awareness), active participation, motor skills

Room Requirements: Students seated on floor, open space for movement, electricity

Students will explore the calming rhythms of our oceans while participating in engaging musical activities that develop focus, balance, and creative thinking. Catch a wave with a sea turtle, dance with dolphins, and wiggle with an octopus as we discover the importance of protecting Earth's oceans and rivers. Experience the amazing sounds and brilliant designs of the handpan and ocean drum. Instruments/drums provided for all participants.

DRUM SAFARI

YOGA

Target Grades: Pre-K - 5

Time: 30-45 minutes • **Capacity:** 30

Curricular Connections: Health (dance, movement), character development (self-awareness, social awareness), active participation, motor skills

Room Requirements: Open space for movement, electricity

World rhythms and animal characters are combined to inspire yoga postures and rhythms. Students will practice strategies for self-calming and creative thinking as they participate in games that encourage balance, cooperative learning skills, and focus.

ANN ZIMMERMAN SONGWRITING WORKSHOP (2-3 session residency)

Target Grades: 4 - 6

Time: Two, 45-minute sessions (or 3 shorter sessions)

Capacity: 25, one classroom

Curricular Connections: Science, language arts, music

Room Requirements: Standard classroom, smartboard/whiteboard, electricity

SESSION I: Students will use reading, singing, listening, and creative thinking to discover the vivid imagery and musical elements that make up some familiar songs, then work together to write new words to a common tune.

SESSION II: Students will learn a traditional song, then work in small groups to write new lyrics for the song. Each group performs the new verses with Ann, as the class listens for imagery and imagination in the writing. After the final session, Ann combines students' new verses and sends them by email to the teacher as a complete outline.

THAD BEACH UKULELE FUN & UKULELE FUN FOLLOW-UP

Target Grades: 3 - 5 Music Classes

Time: 25 - 50 minutes

Capacity: 30, single class

Curricular Connections: Music, motor skills, social-emotional

Materials: Smartboard, classroom ukuleles
Room Requirements: Standard music classroom with smartboard

UKULELE FUN: Get your ukulele students inspired as Thad showcases some of his favorite ukulele songs highlighting the key, chords and techniques. Students will not need ukes for this session.

DRAMA, MOVEMENT, & MUSIC

UKULELE FUN FOLLOW-UP: For music classes that have had the first Ukulele Fun session or second-year students. Thad will customize a follow-up session to meet the skill level of students. With ukuleles in hand, students will receive group and individual guidance as they explore a new technique and expand their skills while they sing, strum, hum and have fun with ukes.



MOVEMENT MATTERS! PRESENTED BY THE IRON STREET DANCE COMPANY Visiting Artist

October 24-25, 2024 • **Target Grades:** 1 - 5

Time: 45 minutes • **Capacity:** 100

Curricular Connections: Health (dance, movement, communities, individual roles in the community), character development, active participation

Room Requirements: Open gym setting or classroom, electricity

In this interactive session, students will learn the importance of staying healthy through physical movement and positive nutrition choices. Students will not only watch two polished dance pieces and hear from the dancers themselves, but will learn some of the dances themselves and discuss the positive effects of physical movement! Movement Matters! provides a post-presentation worksheet for students and teachers to discuss the real-life application of what they learned with Iron Street Dance Company.

**THE COLORS I FEEL
- PRESENTED BY STAGE
DOOR 1 MUSIC THEATRE
COMPANY**

Visiting Artist

March 27-28, 2025



Target Grades: 1 - 5

Time: 45 minutes • **Capacity:** 100

Curricular Connections: Social-emotional, character development

Room Requirements: Gym, Open Classroom, or Auditorium.

Stage Door 1 Music Theatre Company is a group of students from 8th to 12th grade who share their knowledge and skills about acting to help create emotional awareness by making image and color associations. Through a live music theatre production with interactive improvisation games, students can explore their relationship to emotion through song, acting, and color. Paired with using acting techniques that can help students identify their feelings through their own physical and vocal changes.

**THEATRE SALINA - CENTER
FOR THEATRE ARTS**

303 E. Iron Avenue • Salina, KS 67401
785-827-6126 • <https://salinatheatre.com/>



Theatre Salina is a non-profit educational organization whose purpose is to enrich the lives of people in Salina and the surrounding region by creating a broad range of quality theatrical programs for their entertainment and education, and to provide people of all ages and backgrounds the opportunity to participate in play production and other theatre activities.



**SALINA SYMPHONY -
PAUL DOOLEY, COMPOSER -
OCTOBER 4, 2024**

**KYLE SAULNIER,
JAZZ PERFORMER/COMPOSER -
NOVEMBER 7-8, 2024**

**MARK KOSOWER,
CELLO - JANUARY 10, 2025**

**LUN LI,
VIOLIN - MAY 2, 2025**

Target Grades: 6 - 12

Time: 45-60 minutes

Capacity: 15-400

Curricular Connections: Fine arts, fine arts career pathways, music

**SALINA YOUTH
EDUCATION PROGRAM**

The Salina Symphony Youth Education Program offers the opportunity for area youth to participate in professionally directed youth ensembles. Members are dedicated to rehearsing weekly throughout the school year to prepare for two to three formal concerts each season. The programs are designed to supplement the school band/choir/orchestra experience, and students must be enrolled in their school program in order to participate. The program also offers students unique opportunities to travel, work with guest conductors, guest artists, and participate in masterclasses

The Youth Education Program offers students the opportunity to audition for the following ensembles:

- **Youth Symphony**—advanced full orchestra
- **Youth String Ensemble**—intermediate string ensemble
- **Youth Jazz Band**—intermediate jazz band
- **Preparatory Youth Orchestra**—beginning string ensemble
- **Youth Choir**—grades 4-8



SALINA SYMPHONY

The mission of the Salina Symphony is to enrich lives through artistic music performance and education.

**BALLET SALINA - TAMARA
HOWE SCHOOL OF DANCE
THE NUTCRACKER BALLET**

Visiting Artist

December 9-10, 2024



Target Grades: 1 - 5

Time: 45 minutes

Capacity: 300 students

Curricular Connections: Health (dance, movement), movement connected to communication of an idea, feeling, or story

Room Requirements: Open gym setting and electricity

In this interactive session, students will learn the history of the Nutcracker ballet, explore the original composer and choreographer, and begin to learn the art of pantomime. Students will explore the elements of a professional ballet including costuming, music, sets, and choreography. Ballet Salina dancers will perform sections from the ballet with various characters as students explore the story of the Nutcracker.



ANN ZIMMERMAN KANSAS SONGS CONCERT

Target Grades: K - 8

Time: 30 - 45 minutes

Capacity: 100

Curricular Connections: Math, history, social studies, science, English language arts (connections according to grade level)

Room Requirements: Standard classroom or gym with students seated on floor or at desks

Students will join in discussion and singing about Kansas, its history, climate, biology, and culture, past and present.

An advanced version is available for middle-school classes.



SONGS OF THE AMERICAN REVOLUTIONARY WAR

Target Grade: 5

Time: 60 minutes

Capacity: 100

Curricular Connections:

English language arts, math, history, science, music

Materials: Smartboard/whiteboard, electricity

Room Requirements: Standard classroom or gym with students seated on floor or at desks, Smartboard/whiteboard, electricity

Students will discuss events and people of the American Revolutionary War, visualize the timeline of the war and sing songs that Americans and others sang.

THAD BEACH

LONGITUDE AND LATITUDE WITH A GEO-MUSICAL ATTITUDE!

Target Grades: 4 - 6

Time: 40 - 50 minutes

Capacity: 30, single class

Curricular Connections: Geography (maps, the globe, U.S. Regions), math (graphing and plotting), music (ukulele,

harmonica bucket bass)

Room Requirements: Classroom, smartboard/whiteboard, markers, copies of handout

Take an exciting, highly participatory global journey as you develop or reinforce geography skills and vocabulary necessary to plot your own longitude and latitude coordinates and identify absolute locations of selected Kansas and U.S. cities.

EXPLORING THE KANSAS DUST BOWL

Target Grades: 3

Time: 45 minutes

Capacity: 30, single class

Curricular Connections: U.S. History, Kansas geography, math (measuring), social-emotional, music (guitar, harmonica)

Room Requirements: Classroom, students at desks, smartboard/whiteboard, markers

Students learn about the Dust Bowl and how children helped their farming families survive. They explore farm chores and household tasks of the 1930's along with how families bartered or traded livestock and farm products to get items they needed.

POSTCARDS FROM THE DUST BOWL

(Residency)

Target Grade: 7

Time: Four, 45-minute sessions

Capacity: 30, single class

Curricular Connections: Social studies (Kansas, U.S. Regions, agriculture, the Dust Bowl, the Great Depression), English language arts (narrative writing), visual arts (sketching, drawing), music

Materials: Copies of handouts, cardstock, copy paper

Room Requirements: Standard classroom, smartboard/whiteboard, markers

During this residency, students learn about the Dust Bowl and Great Depression through multimedia images, primary source interviews and Thad's original songs in order to discuss technology, agricultural practices and environmental causes and effects. They will use creative writing, visual art and musical experiences to create personas and express their characters' emotions and situations, describing Dust Bowl events by writing postcard notes and sketching and sharing with classmates.

SOCIAL STUDIES



DINO O'DELL Visiting Artist

October 8-9,
2024

AROUND THE
WORLD

Target Grades:
K - 3

Time: 45 minutes

Capacity: 120

Curricular Connections: Physical geography, landforms, social-emotional

Room Requirements: Classroom or gym; electricity

This geographical journey transports students to all seven continents and highlights details about each one. The students learn about the world's longest river, tallest mountain, and the largest desert. Students also learn the names and locations of all the continents, and important cultural facts about each one.

PUBLIC ART IN SALINA

Target Grades: 3 - 12

Time: 45 minutes

Capacity: 25, one classroom

Curriculum Connections: Healthy communities, social-emotional, fine arts career pathways, fine arts, visual arts

Room Requirements: Smartboard or projector

Salina Arts & Humanities staff discuss public art in Salina, KS, including the City of Salina's permanent collection, public funding, and other art in public places. Students will be prompted to think about murals, monuments, memorials, public performance art, and how each relates to their lives.



DOODLE MURAL COLLABORATION - DARREN MORAWITZ

SALINA ART CENTER

Target Grades: 6 - 12

Time: 45 minutes

Capacity: 25 students, one classroom

Curricular Connections: Social-emotional, character development (decision making, problem-solving, goal setting, social awareness, interpersonal skills), fine art (creative thinking, scale, creating, responding, connecting)

Room Requirements: classroom, students seated, wall space

Materials: Computer paper, markers, tape

Students will explore idea generation and creative problem-solving through a collaborative mural project in which they will be guided to create a doodle grid to scale a prepared image. The class will get to keep their work of art as well as take away lessons in collaboration, communication, problem-solving, creative thinking, scale, and how many small and unique pieces create a whole.

SALINA ART CENTER

242 S Santa Fe Avenue • Salina, KS 67401
(785) 827-1431 • www.salinaartcenter.org
EDUCATIONAL PROGRAMMING

For over 30 years, the Salina Art Center (SAC) has produced educational programs centered on its mission, to create exchanges among art, artists, and audiences that reveal life.

The Salina Art Center invites you to learn, experience, and create! The Art Center offers a variety of opportunities for learners of all ages to connect with contemporary art and artists. Develop new skills, explore different mediums, participate, and find your creative voice. Programming includes workshops, the ARTery, artist talks, tours, and more. Personalized tours and group activities are also available.

For a comprehensive list of all educational opportunities, including after-school classes and summer sessions, visit www.salinaartcenter.org or call 785-827-1431. ALL CLASSES are held at the SAC Warehouse and Education Studio on 149 S. 4th Street.

TIA WESTLING

DINO EXPLORERS: ADAPTIVE SENSORY PLAY

Target Grades: Pre-K/Adaptive Needs

Time: 25 - 45 minutes

Capacity: 15

Curricular Connections:

Fine motor, sensory

Materials: Open space and para support.

Room Requirements: Standard classroom size, space on tile not carpet, separate space for art area

Welcome to Dino Explorers: A

Sensory Adventure! Dino Explorers is a specialized class designed for children with special needs, focusing on the captivating world of dinosaurs through literature, songs, messy play, interactive open play, and sensory activities. Our goal is to provide a stimulating and inclusive environment where every child can learn, play, and thrive.

ART IN MOTION

Target Grades: Pre-K, K

Time: 25 - 45 minutes

Capacity: Pre-K - 15, K - 25

Curricular Connections:

Art, fine/gross motor skills, music, social-emotional.

Materials: A white sheet of paper, space to put art work while it dries.

Room Requirements:

Standard classroom

size space on

tile not carpet;

Separate space for

art area



Pumpkin Patch - Fall Semester

Join an exciting journey into the world of music and art with our "Pumpkin Palooza" class designed for children aged 3 to 6! Inspired by the beloved children's book "There Was an Old Lady Who Picked a Pumpkin" by Lucille Colandro, this engaging and interactive class combines fine and gross motor skill development with the magic of music and art. In this dynamic program, our little explorers will embark on a series of imaginative activities and creative exercises that bring the story to life. Through a combination of movement, music, and artistic expression, children will develop essential motor skills while fostering their love for art with a take-home craft!

Flower Fun - Spring Semester

Welcome to our delightful "Flower Fun" class, specially designed for children aged 3 to 6, where we'll embark on a spring adventure exploring fine and gross motor skills through the enchanting world of flowers through art! This interactive and hands-on class combines music, physical movement, and artistic expression to foster motor skill development while igniting children's imaginations. During this engaging program, children will immerse themselves in a variety of activities that capture the essence of growing a flower while taking a craft home!

VISUAL ARTS





ROLLING HILLS ZOO

325 N. Hedville Road • Salina, KS 67401
www.rollinghillzoo.org • 785-827-9488

ZOO TO YOU

Can't bring your class out to the Zoo? Then let the Zoo come to you with jam-packed FUN! These interactive wildlife-themed lessons will include touchable bio-facts, an introduction to live animal ambassadors, and a conservation message. Each Zoo To You class is adaptable to any age group. While there is no minimum or maximum number of students, the ideal class size is 35 or less. Pricing is based on the location's distance from the Zoo.

DISCOVERY CLASS

Have an extra-special adventure at the Rolling Hills Zoo! These interactive classes allow you to choose from one of the many topics available for ages K-8. All classes include an interactive lesson and hands-on experience handling such things as skins, skulls, and teeth. Students will also get to meet a live animal ambassador. Classes are 30 minutes long with a suggested participation size of 35 or less. Give us a call to learn more about our Discovery Class options and pricing.

ZOO PALOOZA

This program is designed for groups of up to 20 people. This is a 30-minute program based on a specific area of the world, a 30-minute Animal Meet & Greet with 3 ambassador animals, and a 15-minute Keeper Encounter or animal training session. (Based upon availability).

ADDITIONAL (SCHOOL BASED) PROGRAMS:

• PERSONAL GUIDED TOUR

Guided by an experienced zoo staff member, these tours are 1 hour long and include three stops - at Great Apes, Rhinos, and Giraffe. At each stop the tour guide will speak at length about the species, their personal histories and wildlife conservation. Maximum group size for each tour is 30. Give us a call for pricing information and to schedule your tour.

THAD BEACH

THE PUMPKIN LIFE CYCLE

Target Grades: Pre-K - 3

Time: 25 - 45 minutes • **Capacity:** 30, single class

Curricular Connections: Science (animals, organisms, and ecosystems; plants and interdependent relationships), music (harmonica, limberjack, bucket bass), social-emotional.

Room Requirements:

Standard classroom



Students explore the life cycle of pumpkins as they observe, respond, sequence, ask questions, and participate in a creative dramatization of the stages of the pumpkin life cycle. Vocabulary and content are adapted to specific grade levels and range from the basic importance of soil, sun and water, to the introduction of the water cycle, pollination and photosynthesis. Meet Pumpkin Jack the dancing limber jack and sing along with the pumpkin patch bucket bass!

DOWN IN THE SWAMP

Target Grades: 3 - 5

Time: 25 - 45 minutes

Capacity: 30, single class

Curricular Connections: Science (animals, organisms, and ecosystems; plants and interdependent relationships), Geography (maps, U.S. regions), Music (ukulele, harmonica, percussion)

Room Requirements: Standard classroom with smartboard/whiteboard

Students explore the wetland biome with Thad's original song "Down in the Swamp" and participate in creative movement activities. By comparing and contrasting various plant and animal species students sharpen their scientific classification skills. Students use their observation and descriptive skills to sketch their own swamp scene. Vocabulary and content are adapted to specific grade levels.

THE SCIENCE OF SOUND

Target Grades: 3 - 5

Time: 25 - 45 minutes • **Capacity:** 30, single class

Curricular Connections: Science (matter and energy, forces, structural properties, waves, light, sound), math, music (string and percussion instruments).

Room Requirements: Standard classroom with smartboard (with students seated on floor)

Students explore how sounds are created for various instruments by understanding structural properties, vibration, resonance, sound waves, pitch, volume and tone.

Topics include how to vary the pitch of a string by manipulating length, tension and density. Students make observations and predictions, compare and contrast sonic characteristics of different types of instruments. Vocabulary and content is adapted to specific grade levels.

MONARCHS AND MILKWEED: THE AMAZING MONARCH MIGRATION

Target Grades: 4 - 6

Time: 45 - 50 minutes • **Capacity:** 30, single class

Curricular Connections: Science (animals, organisms, and ecosystems, plants, interdependent relationships), geography (U.S. regions), music (ukulele, harmonica), social-emotional.

Room Requirements: Standard classroom with smartboard, copies of handout

Students follow the migration journey from the wintering grounds in the mountains of Mexico, north to Kansas, and onward to the Prairie Provinces of Canada! Students explore adaptations, predators, climatic elements, food sources and human interactions that affect monarch populations. Vocabulary and content is adapted to specific grade levels.

***Get your requests in early for the September Monarch Migration.**

THE FROG LIFE CYCLE

Target Grades: Pre-K - 3

Time: 25 - 45 minutes

Capacity: 30, single class

Curricular Connections: Science (animals, organisms, and ecosystems; plants and interdependent relationships) music (ukulele, harmonica, bucket bass), social-emotional.

Room Requirements: Standard classroom

Welcome to the Frog Pond for an engaging musical exploration of life cycle vocabulary through creative dramatizations and classroom collaborations. We'll work together to explore the stages and sequences of metamorphosis, predator and prey relationships, habitats, camouflage, and unique amphibian adaptations for survival. Scientific complexity increases with grade level.



DINO O'DELL Spring 2025 TBA
Visiting Artist

THE MILKY WAY, MOONS, AND METEORITES!

Target Grades: K - 5 • **Time:** 45 minutes • **Capacity:** 120
Curricular Connections: Space systems, stars and the solar system
Room Requirements: Classroom or gym

Students learn about Earth, Earth's atmosphere, our solar system, the planets, friction, the greenhouse effect, and the difference between meteors, meteorites, and meteoroids. We also talk about stars, shooting stars, planets that look like stars, the moon, and historical figures from space like Yuri Gagarin, Neil Armstrong, and Sally Ride. Participating teachers will also receive a post-session worksheet.

FRIENDS OF THE RIVER FOUNDATION



MYSTERY ON THE RIVER - Fall Semester 2024

Target Grades: K - 2
Time: 45 minutes • **Capacity:** 100
Curricular Connections: Science, social studies, social-emotional, and character development
Room Requirements: Classroom or gym
Experience and participate in an adventure as we learn about the Smoky Hill River through puppetry and storytelling. Join Bella Beaver and the gang as they meet a new face and figure out if she is friend or foe; then

continue the adventure with a "who dun it" mystery. These stories introduce the defenses of animals along the river as well as use clues to track down a sneaky character.

EARTH DAY: RIVER RESCUE April 2025 • **Target Grades:** 3 - 5

Time: 50 minutes • **Capacity:** 25 students
Curricular Connections: Water protection, human activity, hazards and renewable resources, ecosystems, multimedia art
Room Requirements: Classroom or gym

Students will learn about runoff and storm water, then help clean the "river," learning to sort waste into reusables, recyclables, compost, and trash. Each student will reuse clean items to build an imaginary animal and decide what kind of habitat the animal lives in, what it eats, and how it interacts with its environment. Students will be able to take home their creationst.

159 S. 4th Street • P.O. Box 953
Salina, KS 67402 • 785-493-8491
janea@smokyhillriver.org



The Friends of the River Foundation strives to restore the natural channel of the Smoky Hill River to its role as an integral part of the aesthetic, recreational, and economic life of Salina. The Foundation offers volunteer opportunities to children under 18. Fall Fix-Up and Spring Spruce-Up are available for students to come and join a river clean-up or a project helping the parks. Dates are Saturday, September 14th and Saturday, April 26th from 8:00 am to noon. Twelve and under must be accompanied by an adult. All tools and materials are provided for students to be able to participate.



THE SMOKY HILL MUSEUM

211 W. Iron Avenue • P.O. Box 101
Salina, KS 67402-0101
www.smokyhillmuseum.org

Nona Miller, Curator of Education
785-833-8023 • nona.miller@salina.org

It's history unexpected at the Smoky Hill Museum! We're an active and responsive teacher resource, offering hands-on, minds-on history. Visit *The Curiosity Shop*, with five areas of engagement (Kansas Weather, World of Radio, Town Building, Tots and The Dirty Thirties). Other offerings include:

- Dynamic, free tours
- Free educational lending library
- Inspiration for artists and writers
- Kansas Days activities (late January)
- Puzzles and research help at smokyhillmuseum.org/programs-and-tours/teacher_resource_area/
- Engaging exhibits in the Central Gallery
- Free First Thursdays (great for extra credit)
- 7th Grade Cultural Crawl

LESSONS/ACTIVITIES: To learn more about these lessons, please call.

- Cowboys: Grades 1 - 2 (A traveling trunk)
- Pioneer Tool Hunt: Grades K - 4
- Pack Your Wagon: Grades 3 - 6
- Butter Churning: Grades K - 4
- WWII: Pack Your Packard: Grades 4 - 7
- Buffalo: Adaptable
- Native Americans: Grades 4 and up
- Indian Burial Pit: Grades 9 and up

NEW ACTIVITIES: If you don't see what you're looking for or if you have an idea, please contact the Curator of Education. New activities may be added throughout the year.



NCE

ENGLISH LANGUAGE ARTS



LORI BRACK

3 POEMS

Target Grades: 6 - 12

Time: 45-90 minutes • **Capacity:** 30

Curricular Connections: Reading literature (craft and structure, key ideas and details), writing (figurative language, word choice, points of view, cultural experiences), social-emotional learning.

Materials: Pencil, paper, copied handouts

Room Requirements: Standard classroom with whiteboard

3 Poems is a lively, interactive lesson that encourages students to read aloud, think and discuss, and write expressively. Excellent poems, selected to reflect each teacher's curriculum and goals, will prompt students to communicate personal connections and examine metaphor, word choice, key ideas, and cultures. Poems and discussion will be the stimulus for students' original writing and supportive sharing.

THAD BEACH

PHONOLOGICAL AWARENESS WITH MR. R

Target Grades: Preschool

Time: 30 minutes

Capacity: 20, single class

Curricular Connections: Social-emotional, language, music

Room Requirements: Standard classroom with students seated on floor

The class participates in activities that help encourage expressing emotions and feelings, build phonological awareness and pre-literacy skills. Students help create an imaginary musical journey with music, songs, chants, and creative props. Listening and speaking, following directions, social skills practice and music integrated throughout.

LITTLE RED READING WAGON

Target Grades: K - 2

Time: 25 - 45 minutes

Capacity: 30, single class

Curricular Connections: English language arts, music (ukulele, harmonica, percussion, limberjack), motor skills, listening and speaking

Room Requirements: Standard classroom

Students explore the alphabet and beginning sounds for alliteration and ending rhyme sounds while brainstorming colors, animals and food for song lyrics. Older grades will also use adjectives, nouns and verbs while constructing lyrics. Students will also be singing with appropriate pace, phrasing, intonation, and rhythm, providing a fun, collaborative way to work together and build phonological awareness and literacy skills. Listening and speaking, following directions, social skills practice and music are integrated throughout.

RADICAL RHYME TIME

Target Grades: 2 - 4 • **Time:** 25 - 45 minutes

Capacity: 30, single class

Curricular Connections: English language arts, music (harmonica, ukulele, bucket bass)

Room Requirements: Standard classroom, smartboard/whiteboard, copied handouts

Students learn Thad's highly successful "Working a Word" speed rhyming strategy to brainstorm rhyme words, create lyric phrases, use adjectives, verbs, and spice it all up with alliteration. Students work individually and collaborate as a group to create new verses. Listening and speaking, following directions, social skills practice and music are integrated throughout.

TRACI BRIMHALL, POET LAUREATE OF KANSAS

Visiting Artist

November 6 & 8, 2024

April 15, 2025

PIE-KU: POETRY AND FOOD

Target Grades: 6 - 8

Time: 45 minutes

Capacity: 30

Curricular Connections: Descriptive writing, metaphor

Room Requirements: Standard Classroom

Explore published poems about food and how the writers use specific and sensory details to bring the flavors and aromas of food to life. Students will also get the opportunity to create their own poems through interactive haiku activities.



DEAR STRANGER: LETTER POEMS

Target Grades: 9 - 12

Capacity: 30

Curricular Connections: Descriptive writing, metaphor, social-emotional learning

Room Requirements: Standard Classroom

This workshop involves poems that use the epistolary—or letter—form to explore ways to write poems that feel direct and full of emotions. Students will get to participate in activities using metaphors to practice descriptive writing skills and expressing emotions.

PRISCILLA HOWE

Visiting Artist

December 3-6, 2024

January 29-31, 2025

STORYTELLER'S CHOICE

Target Grades: All grades, tailored to the audience

Time: 30 - 45 minutes • Capacity: 200

Curricular Connections: Prediction sequencing, writing, listening, language arts, social studies, character education

Room Requirements: Classroom or gym with students seated on floor or at desks

Whether she's telling world folktales, stories from books, or her own stories with a twist, Priscilla Howe's interactive storytelling performances engage the audience completely. Upper elementary and middle school students fall into a story-listening trance, while younger kinesthetic learners join in on hand motions, songs, and chants. Priscilla's hand puppets come along for the ride with the younger listeners. Students often leave the session repeating lines from the stories or acting them out—and teachers report hearing the stories from students for the next week.



STORYTELLING, STORY WRITING WORKSHOP

Target Grades: 4 - 6

Time: 45 minutes • Capacity: 30

Curricular Connections: Prediction sequencing, writing, listening, English language arts

Materials: Pencil, paper

Room Requirements: Standard classroom.

Storytelling is a perfect lead-in to creative writing. In this highly participatory workshop, storyteller Priscilla Howe introduces concepts such as the difference between oral and written stories, story structure, and backstory. With an open and good-natured attitude, she guides the students in writing exercises to flex and stretch their creative muscles.

KINDNESS, COMPASSION, AND COURAGE: STORIES FOR CHARACTER EDUCATION

Target Grades: K - 6

Time: 30 - 45 minutes • Capacity: 200

Curricular Connections: Reading, language arts, character education, social-emotional and character development

Room Requirements: Classroom or gym

These stories highlight character traits such as kindness, courage, respect, and more. After the stories, Priscilla invites listeners to reflect on the traits and how those traits might manifest in their own lives.



SALINA
PUBLIC
LIBRARY

SALINA PUBLIC LIBRARY

301 W. Elm St. • Salina, KS 67401
785-825-4624 • <https://salinapubliclibrary.org/>

EDUCATOR CARDS

Salina Public Library offers a library card specifically for educators that allows them to supplement their curriculum with an abundant, ever-changing supply of books at varying reading levels. Teachers can create temporary classroom collections, check out content, and reserve multiple copies from the library's collection. The cardholder will not incur overdue fines.

THE LIBRARY'S COLLECTION

The library has a dynamic collection of print and digital books, music, movies, and TV series, as well as video games, hotspots, research databases, and online learning resources. The collection covers a wide range of topics from literature to history to science to art. Purchasing suggestions are welcome, and staff are happy to help with book lists.

KANOPY

Salina Public Library now offers a growing selection of nearly 30,000 thought-provoking and entertaining movies, documentaries, and series from Kanopy, including videos to enhance your curricula in all academic subject areas. These videos are absolutely free to anyone with a public library card. Visit salinapubliclibrary.org/kanopy to get started.

TOURS & VISITS

Tours or instruction that highlight the library's print and electronic resources are available to groups or individuals. Staff are available to visit schools to share information about library resources.



HOME OF THE CROSSROADS CAR EXPERIENCE
KKOA MUSEUM & HALL OF FAME

THE GARAGE

134 S Fourth Street • thegaragesalina.org
Visit the new 40,000 sq. ft. garage in downtown Salina to explore The Garage's rotating collection of artifacts and learn stories of American innovation. Explore. Imagine. Create.



**KANSAS
WESLEYAN**
UNIVERSITY

KANSAS WESLEYAN UNIVERSITY

100 E. Claflin Ave. • Salina, KS 67401
785-827-5541 • kwu.edu

Barbara Marshall Nickell, Chair of the Division of Fine Arts
bmarsh@kwu.edu

Through educational outreach and seasonal programming, the KWU Division of Fine Arts shares with the Salina community a passion for learning and the responsibility of knowledge.

The Theatre Arts Program in the Department of Communication Studies and Theatre Arts offers concentrations in Theatre and Music Theatre. Students and professors are active participants in the larger theatre community in throughout Kansas and Theater Salina.

The Art and Design Department connects with the community through free gallery exhibits and discussions. It also provides professional art, design, and photography services. Students have provided logos, business cards, and flyers for area businesses and individuals.

Vocal and Instrumental Music faculty and students provide KMEA Music Learning Day, jazz and band festivals, and outreach concerts for care homes and area churches. The music faculty and students are heavily involved with Salina Symphony.

All areas of Fine Arts at KWU have enjoyed hosting interns from area high schools. Contact the Chair of the Division of Fine Arts, Barbara Marshall Nickell, bmarsh@kwu.edu for more information.

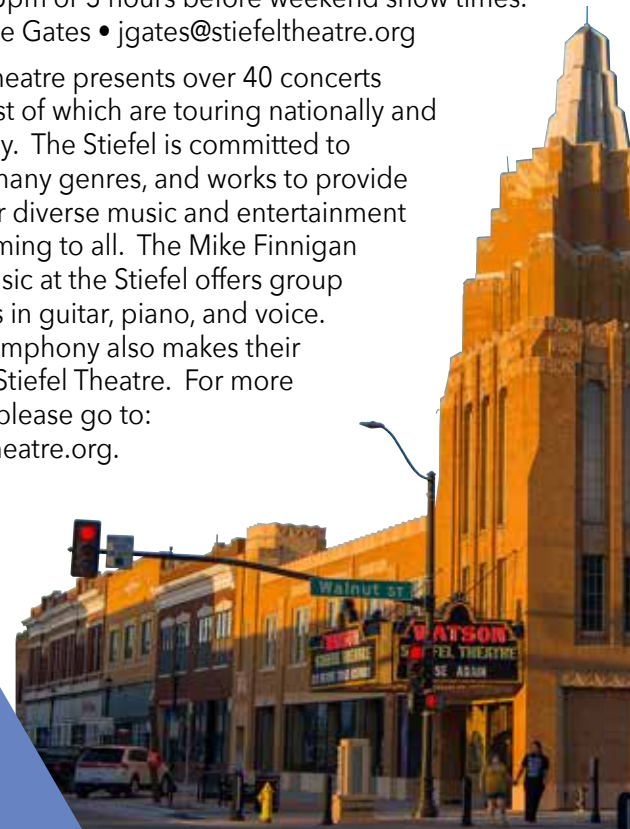
COMMUNITY CULTURAL OFFERINGS



STIEFEL THEATRE FOR THE PERFORMING ARTS

151 S. Santa Fe • 785-827-1998 • stiefeltheatre.org
M-F, 12pm - 5pm or 3 hours before weekend show times.
Contact: Jane Gates • jgates@stiefeltheatre.org

The Stiefel Theatre presents over 40 concerts annually, most of which are touring nationally and internationally. The Stiefel is committed to celebrating many genres, and works to provide a platform for diverse music and entertainment that is welcoming to all. The Mike Finnigan School of Music at the Stiefel offers group music classes in guitar, piano, and voice. The Salina Symphony also makes their home at the Stiefel Theatre. For more information, please go to: www.stiefeltheatre.org.



SALINA ARTS & HUMANITIES

Contact Salina Arts & Humanities
Phone: 785-309-5770
Email: sah@salina.org
Website: <http://salinaarts.com/>

CULTURAL COMMUNITY WEBSITE -

<http://salinaarts.com/>
The SAH website features a link to the Salina Arts & Entertainment Calendar (salinaae.com), a gallery of local public art, and an extensive list of area arts and cultural organizations, galleries, and other arts resources.

HORIZONS GRANTS

The Horizons Grants Program is a project of The Salina Arts & Humanities Foundation, offering support to local cultural and service agencies and artists through a variety of grant categories. Grants offered are:

- Lana Jordan Developing Artist Grants
- Organizational Project Grants
- Enrichment Grants

Grants are available to those residing in Saline County for at least one year and to non-profit agencies. Guidelines and applications are available online.

CREATIVE CONNECTIONS

A biweekly e-newsletter dedicated to creatives featuring exhibition, performance, employment, professional development, and cultural opportunities.

SALINA ARTS & HUMANITIES RESOURCES

SMOKY HILL RIVER FESTIVAL

Salina's flagship arts celebration brings 60,000 people to Oakdale Park each June. The Festival features national, regional, local, and student performers, a highly ranked Fine Art and Craft Show, Artyopolis, regional food, and more for all ages. Volunteers of all ages are welcome to help produce this vibrant and unique community event. The Smoky Hill River Festival is a project of Salina Arts & Humanities.

June 12-15, 2025

SPRING POETRY SERIES -

Tuesdays in April

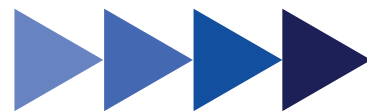
The Spring Poetry Series celebrates National Poetry Month by presenting poets of national, regional, and emerging status. Scholarships are available through SAH to facilitate student attendance. Poets are available for classroom visits throughout the month of April.

COMMUNITY PROGRAMS AND SERVICES

SAH provides a variety of services to the general community, including arts advocacy, assistance in locating artists or resources, and in its role as the arts and cultural department of the City of Salina.

THE CULTURAL ROUNDTABLE

The Cultural Roundtable is a consortium of local museums, libraries, galleries, educational institutions, performance, and service organizations. They collaborate to schedule and promote programs, exhibits, and activities of interest to Salina residents and visitors.



COMMUNITY ART AND DESIGN (CAD) COMMITTEE

Salina Arts & Humanities (SAH) helps bring public art to Salina. Alongside SAH, the CAD Committee plays a vital role in the process of creating Public Art. Its mayoral-appointed membership consists of at-large community members as well as others who bring specific art experience and knowledge to the group.

Creating a piece of public art requires teamwork. On each project, SAH works with the CAD committee and a Site Committee comprised of a cross-section of community members and stakeholders.

The creation of this advisory group was initiated by a citizen-driven desire to create a public art program. CAD assists SAH staff in facilitating the program and implementing the City's Community Art and Design Policy for all public artworks installed on public property. CAD also supports community education, project awareness, marketing of the program, and resource assistance.

PUBLIC ART IS MEANT TO BE:

- Rewarding! It provides an opportunity for people to see the world around them in a new way.
- Diverse! It can include murals, sculptures, memorials, and more.
- Transformative! It improves the quality of life and inspires conversation.
- Reflective! Great public art reflects the community for which it is created.

The next time you look at a piece of Salina's public art, ask yourself the following questions:

- How does public art make you feel when you see it?
- What aspects of the artwork reflect either the place or the people of Salina?
- If you were to create a piece of public art for Salina, what would it be? Where would you put it and why?

For more information and maps of the public art in Salina, go to the webpage <https://www.salinaarts.com/public-art/>

SAH staff welcomes the opportunity to present a program highlighting the importance of public art and the inclusive process leading to its creation in Salina and regionally. To schedule, contact sah@salina.org or call 785-309-5770.

PUBLIC ART IN SALINA, KS

MURAL REVEAL!

YOU'VE SEEN THE TEXTURES AND COLORS OF THE MURALS THROUGHOUT THE GUIDE - NOW SEE THEM IN THEIR ENTIRETY. EACH OF THESE MURALS WERE PAINTED IN 2023 AND ARE ON DISPLAY IN SALINA. VISIT THE MURALS IN PERSON TOO!

2023 BOOM! Salina Mural by Queen Andrea.
Located near the Salina Tennis Facility
805 The Midway facing E Kenwood Park Drive



2023 BOOM! Salina Mural by MadC
Located near Strand Plaza 125 South 5th Street



BOOM! Salina celebrated its second annual mural festival in the heart of downtown Salina, KS in October 2023. The festival is funded through private and crowd sourced donors that share a creative hunger to be bold and inspiring. BOOM! Salina is backed by the Salina Kanvas Project. To learn more about the Salina Kanvas Project, visit kanvasproject.com. Learn about BOOM! Salina 2024 by visiting boomsalina.art.



PRESENTED BY
**SALINA ARTS
& HUMANITIES**

a department of the City of Salina
in partnership with USD 305



Content written by Sarah Keck, SAH staff, teaching artists, and community cultural agencies.

Design by Consolidated Printing.

SALINA ARTS & HUMANITIES

211 W. Iron (Second Floor)

PO Box 2181 • Salina, KS 67402-2181

Phone 785-309-5770 • Fax 785-826-7444

Email: sah@salina.org • <http://salinaarts.com/>

STAFF:

Brad Anderson • Executive Director

Sarah Keck • Arts Education Coordinator

Anna Pauscher Morawitz • Operations & Development Manager

Crystal Hammerschmidt • Arts Services Coordinator

Amanda Morris • Office Administrator

Susan Eberwein • Program Assistant

Maira Mota • Accounting Technician