



Arts Infusion

2022-2023

PROGRAM AND ACTIVITY GUIDE

**FOR TEACHERS, STUDENTS,
AND COMMUNITY MEMBERS**

**PRESENTED BY
SALINA ARTS & HUMANITIES**

FOR NEEDED ACCOMMODATIONS,

please call Amanda Morris at Salina Arts & Humanities at 785-309-5770 between 8:00 a.m. - Noon and 1:00 p.m. - 5:00 p.m. Every effort will be made to accommodate known disabilities. For material or speech access, please call at least five working days prior to the event.

SALINA ARTS & HUMANITIES,

a department of the City of Salina, has served a unique role as an arts advocate and resource partner since 1966. The Smoky Hill River Festival, Horizons Grants Program, Smoky Hill Museum, Arts Infusion Program in schools, Community Art & Design, and Creative Connections are among the programs of Salina Arts & Humanities, located at 211 W. Iron Avenue in Salina.



Greater
Salina
Community
Foundation

The Greater Salina Community Foundation is an important community partner that provides the resources for many arts and cultural

programs in Salina. A variety of the programs and activities in this guide are supported in part through the Foundation and its donors.

The Greater Salina Community Foundation is a collection of funds designed to link donors with charitable causes that meet the needs of the Saline County area and neighboring counties such as Cloud, McPherson, Russell, and Ellsworth.

The Foundation aims to build a permanent endowment that facilitates prudent management and care of donor funds to enhance quality of life, both now and in the future.



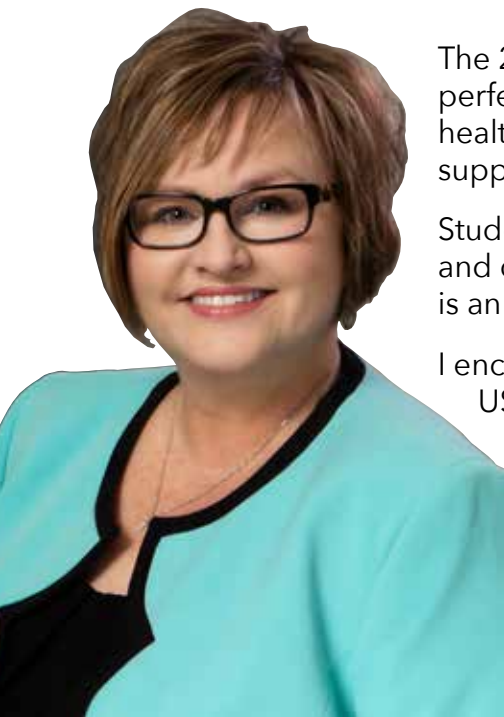
TABLE OF Contents

Introduction.....	4
Program Overview	5
Teaching Artist Overview	6-7
Artists and Agencies.....	8-15
Drama, Movement, and Music	8-10
Social Studies	11
Visual Arts.....	12
Science.....	12-13
English Language Arts.....	14-15
Community Cultural Offerings	16
Salina Arts & Humanities Resources	17
Public Art in Salina, KS.....	18

2021-2022 SCHOOL YEAR DATA

Teaching Artists & Cultural Organizations	29
Virtual & Pre-Recorded Sessions Offered	27
STUDENTS SERVED	11,356
Community Events	5
Community Member Contacts	335

Arts Infusion Program contacts are figured consecutively, i.e. if a student sees an artist two times, it is considered two contacts.



The 2022-23 Arts Infusion theme of social-emotional learning comes at a perfect time for Salina Public Schools. With our students' social-emotional health a top priority, artistic, creative approaches offer a beneficial layer of support.

Students benefit as the arts help construct meaning and build communication and critical thinking skills. The Arts Infusion focus on social-emotional learning is an ideal assist as we continue to strengthen belonging in our schools.

I encourage you to be a part of this well-established partnership between USD 305 and the Arts Infusion Program. Take a few minutes and view how these enriching programs will support the learning, exploration, and acceptance your classroom offers.

Linn Exline, Superintendent

Dear Teachers and Citizens of Salina,

Salina Arts & Humanities has offered cultural arts education and enrichment for the community since its founding in 1966. Over the last 55 years, the variety and diversity of offerings have increased partly due to the valued partnership with USD 305 and the strong collection of cultural organizations in Salina.

Visiting and local teaching artists provide students excellent opportunities to find their unique voices and develop a sense of pride as they engage with the arts. The arts are uniquely suited to help kids develop socially and emotionally as they participate in creative acts.

This guide is full of opportunities for children, youth, and adults to "get their creativity on" as they explore all there is to do in Salina. Please explore the program and include music, theatre, literature, and visual art in your life. There are numerous affordable offerings, and the benefits are great!

Sincerely,

Brad Anderson
Executive Director, Salina Arts & Humanities



PROGRAM OVERVIEW

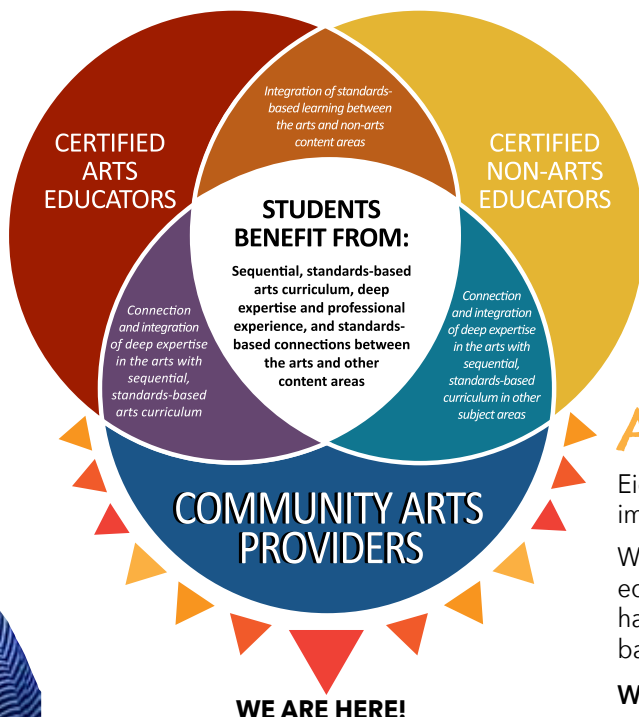
Arts Infusion

HISTORY

Presenting the arts in schools has been the foundation of program activity for Salina Arts & Humanities (SAH) since 1966. Currently, Arts Infusion represents a much broader perspective in arts education, with resources extended throughout the district, and with secondary students targeted through artist residencies and opportunities to participate in the larger community's cultural environment.

OBJECTIVES

- Encourage involvement in the arts as a source of creative expression and personal fulfillment.
- Recruit, mentor, and employ Salina and area professionals as teaching artists in classrooms at all levels of instruction, grades Pre-K through 12.
- Involve secondary students; impacting them with master classes and workshops led by practicing artists.
- Support teachers and artists in learning methods of arts integration across curriculum.



HOW IT WORKS

Visit salinaarts.org and navigate to the Programs page to access the digital guide and Google Form to request an artist visit. Please note that once you have requested a Teaching Artist, you must be responsive to emails and phone calls regarding scheduling. **Final date for making priority requests is 8 a.m. on Wednesday, August 31, 2022.** This only pertains to the Arts Infusion Program - not the other organizations in the Guide.

A request does not guarantee that the artists will visit your classroom. However, SAH and artists work hard to get as many sessions scheduled as possible.

The sign-up form is also available online at salinaarts.org; or by emailing Salina Arts & Humanities at: sah@salina.org.

Once the selection process is complete, local Teaching Artists will contact teachers individually after receiving a list of educator requests. Typically this happens in mid-September, with presentations beginning in September and concluding in May. However, if you have a need for an earlier presentation, please contact the SAH Arts Education Coordinator (sarah.keck@salina.org).

SAH and artists are open to a high level of customization and are available to assist in locating resources.

MAKE A REQUEST

- Find digital guide at www.salinaartorg or email sah@salina.org
- Use the Google Form to request a session for your classroom
- Make requests by 8 a.m. Wednesday, August 31, 2022

HELP SCHEDULE PROGRAMS

- Be a great partner when contacted by a teaching artist or SAH
- Responsive emails and phone calls about scheduling make programs happen

ASK US!

- ASK US! We may be able to customize a program for you
- ASK US! We may be able to do an early September or spring program request
- Have a question, an idea for a program, a concern - let us know!

ARTS EDUCATION – A Shared Endeavor

Eighty-eight percent of Salina residents agree that arts education in our schools is important to the community.

We are fortunate to have strong support of the arts in the classroom and talented arts educators working hard in our schools. Through Arts Infusion, classroom teachers have access to community organizations and teaching artists that provide standards-based arts learning experiences.

When we work together, **ALL** students benefit! **#ArtsMatterSalina**

TEACHING ARTIST OVERVIEW

The Arts Infusion teaching artists have received training from a number of arts institutions (the John F. Kennedy Center for the Performing Arts, Kansas Department of Education) in making applications to English language arts, science, history, and more. Many local teaching artists have received Salina Arts & Humanities' Horizons Developing Artist grants to increase their knowledge of how to implement their artistry in appropriate ways.

Some sessions include optional pre- and post-activities for the teacher to use. Additional details about each session are available upon request. All lessons are approximately 50 minutes unless otherwise specified.

- **Artists by Subject**
- **Artists by Grade**
- **Artists by Format**

SHARON BENSON VISITING ARTISTS

The Sharon Benson Visiting Artist program designates a teaching artist each year, to provide educational programs and content that reflect cultural diversity while connecting the arts to new and established audiences in relevant ways.

Sharon Benson served as the Arts Education Coordinator for Salina Arts & Humanities from 1994-2014. During that time, Benson worked with local and nationally known artists to develop programs to support the existing school curriculum.

Her passion for the power of arts education to present thoughtful, curriculum-based encounters between students and the arts provided an excellent foundation for the Arts Infusion program, now in its 33rd year.

This year, the Sharon Benson Visiting Artists are Amado Espinoza and Karen Lisondra, international folk musicians from Kansas City.



VISITING ARTIST DATES

SALINA SYMPHONY -

MARIA IOUDENITCH & GABRIEL PROKOFIEV

- September 23, 2022
- November 4, 2022

DRUM SAFARI

- October 10-11, 2022
- Spring TBA

ACOUSTIC EIDOLON

- October 20-21, 2022

SALINA COMMUNITY THEATER - IRON STREET DANCE COMPANY

- October 27-28, 2022

AMADO AND KAREN'S ANDEAN MUSIC ODYSSEY

- November 7-8, 2022

PRISCILLA HOWE

- December 5-8, 2022
- February 1-3, 2023

EDMUND AND RUDOLPH STEIN

- January 24-25, 2023

KEVIN SPENCER

- February 20-21, 2023

HUASCAR MEDINA

- March 1-2, 2023

Subject	Thad Beach	Ann Zimmerman	Lori Brack	Dr. Milt Allen	Darren Morawitz	Acoustic Eidolon	Edmund & Rudolph Stein	Kevin Spencer, Ph.D.	Friends of the River	Priscilla Howe	Drum Safari	Amado and Karen's Andean Odyssey	Theatre Salina	Salina Symphony	Public Art In Salina	Huascar Medina
Social-Emotional	Pg. 8, 11, 12,13, 14		Pg. 14	Pg. 9	Pg. 12			Pg. 8	Pg. 13	Pg. 14, 15	Pg. 8		Pg. 9		Pg. 12	Pg. 15
Dance/Movement											Pg. 8	Pg. 10	Pg. 9			
Fine Arts				Pg. 9	Pg. 12	Pg. 10	Pg. 10							Pg. 9	Pg. 12	
Fine Arts Career Pathways						Pg. 10	Pg. 10					Pg. 10		Pg. 9	Pg. 12	
Geography	Pg. 11, 13															
Global Awareness						Pg. 10						Pg. 10				
Health											Pg. 8		Pg. 9			
History	Pg. 11	Pg. 11										Pg. 10				
English Language Arts	Pg. 14	Pg. 8, 11								Pg. 14, 15						Pg. 15
Math	Pg. 11	Pg. 11														
Motor Skills	Pg. 8, 14			Pg. 9				Pg. 8			Pg. 8					
Music	Pg. 8, 11, 12,13, 14	Pg. 8, 11		Pg. 9		Pg. 10	Pg. 10				Pg. 8	Pg. 10		Pg. 9		
Reading			Pg. 14													Pg. 15
Science	Pg. 11, 12, 13	Pg. 8, 11		Pg. 9					Pg. 13			Pg. 10				
Social Studies	Pg. 11	Pg. 11							Pg. 13	Pg. 14						
Speaking and Listening	Pg. 14							Pg. 8		Pg. 14, 15					Pg. 12	Pg. 15
Visual Arts				Pg. 12											Pg. 12	
World Language						Pg. 10						Pg. 10				
Writing			Pg. 14							Pg. 14, 15						Pg. 15
Grade Level	Thad Beach	Ann Zimmerman	Lori Brack	Dr. Milt Allen	Darren Morawitz	Acoustic Eidolon	Edmund & Rudolph Stein	Kevin Spencer, Ph.D.	Friends of the River	Priscilla Howe	Drum Safari	Amado and Karen's Andean Odyssey	Theatre Salina	Salina Symphony	Public Art In Salina	Huascar Medina
Pre-K	Pg. 12, 14					Pg. 10			Pg. 13	Pg. 14, 15	Pg. 8					
K	Pg. 12, 14	Pg. 11				Pg. 10			Pg. 13	Pg. 14, 15	Pg. 8					
1	Pg. 12, 14	Pg. 11		Pg. 9		Pg. 10			Pg. 13	Pg. 14, 15	Pg. 8		Pg. 9			
2	Pg. 12, 14	Pg. 11		Pg. 9		Pg. 10			Pg. 13	Pg. 14, 15	Pg. 8	Pg. 10	Pg. 9			
3	Pg. 8, 11, 12, 13, 14	Pg. 11		Pg. 9		Pg. 10		Pg. 8		Pg. 14, 15	Pg. 8	Pg. 10	Pg. 9		Pg. 12	
4	Pg. 8, 11, 13	Pg. 8, 11		Pg. 9		Pg. 10		Pg. 8		Pg. 14, 15	Pg. 8	Pg. 10	Pg. 9		Pg. 12	
5	Pg. 8, 11, 13	Pg. 8, 11		Pg. 9		Pg. 10		Pg. 8		Pg. 14, 15	Pg. 8	Pg. 10	Pg. 9		Pg. 12	
6	Pg. 11, 13	Pg. 8, 11	Pg. 14	Pg. 9	Pg. 12	Pg. 10	Pg. 10	Pg. 8		Pg. 14, 15		Pg. 10		Pg. 9	Pg. 12	Pg. 15
7	Pg. 11	Pg. 11	Pg. 14	Pg. 9	Pg. 12	Pg. 10	Pg. 10	Pg. 8		Pg. 14, 15		Pg. 10		Pg. 9	Pg. 12	Pg. 15
8		Pg. 11	Pg. 14	Pg. 9	Pg. 12	Pg. 10	Pg. 10	Pg. 8		Pg. 14, 15		Pg. 10		Pg. 9	Pg. 12	Pg. 15
High School			Pg. 14	Pg. 9	Pg. 12	Pg. 10	Pg. 10	Pg. 8		Pg. 14, 15		Pg. 10		Pg. 9	Pg. 12	Pg. 15
Format	Thad Beach	Ann Zimmerman	Lori Brack	Dr. Milt Allen	Darren Morawitz	Acoustic Eidolon	Edmund & Rudolph Stein	Kevin Spencer, Ph.D.	Friends of the River	Priscilla Howe	Drum Safari	Amado and Karen's Andean Odyssey	Theatre Salina	Salina Symphony	Public Art In Salina	Huascar Medina
In-class workshop	Pg. 8, 11, 12, 13, 14	Pg. 8, 11	Pg. 14	Pg. 9	Pg. 12	Pg. 10	Pg. 10	Pg. 8	Pg. 13	Pg. 14, 15	Pg. 8	Pg. 10	Pg. 9	Pg. 9	Pg. 12	Pg. 15
Assembly - Over 50 students		Pg. 11				Pg. 10			Pg. 13	Pg. 14, 15	Pg. 8	Pg. 10	Pg. 9			
Residency - Multiple visits to same class	Pg. 8, 11	Pg. 8	Pg. 14								Pg. 8					

KEVIN SPENCER, PH.D.

Visiting Artist

February 20-21, 2023

Target Grades: 3 - 10

Time: 30 - 50 minutes

Capacity: 25, one classroom

Curricular Connections: Cognitive skills, motor skills, communication, social-emotional and character development, active participation

Room Requirements: Standard classroom, space for movement

Spencer will visit special education and inclusive classrooms. First, he will perform a few minutes of magic, then students will learn simple magic tricks designed to improve cognitive, motor, communication, and social skills while developing creativity and imagination. Activities can be coordinated to connect with academic content upon request.



DRAMA, MOVEMENT, & MUSIC

DRUM SAFARI

Visiting Artist

October 10-11, 2022

Spring TBA



SAMBA WALK

Target Grades: Pre-K - 3

Time: 30-45 minutes

Capacity: 300

Curricular Connections: Health (dance, movement), character development (self-awareness, social awareness), active participation, motor skills

Room Requirements: Students seated on floor, open space for movement, electricity
Students are invited to join a musical "safari" - they will be introduced to South American animals whose names are set to rhythm. After meeting the animals, each child is given a percussion instrument... and the jungle jam begins! As the rhythms of the animals lock together, an exciting sense of community begins to develop. This program includes interactive songs, dancing, and of course, DRUMMING!

SOUNDS OF THE SEA

Target Grades: K - 4

Time: 30-45 minutes

Capacity: 300

Curricular Connections: Health (dance, movement), character development (self-awareness, social awareness), active participation, motor skills

Room Requirements: Students seated on floor, open space for movement, electricity
Students will explore the calming rhythms of our oceans while participating in

engaging musical activities that develop focus, balance, and creative thinking. Catch a wave with a sea turtle, dance with dolphins, and wiggle with an octopus as we discover the importance of protecting Earth's oceans and rivers. Experience the amazing sounds and brilliant designs of the handpan and ocean drum. Instruments/drums provided for all participants.

DRUM SAFARI YOGA

Target Grades: Pre-K - 5

Time: 30-45 minutes

Capacity: 30

Curricular Connections: Health (dance, movement), character development (self-awareness, social awareness), active participation, motor skills

Room Requirements: Open space for movement, electricity
World rhythms and animal characters are combined to inspire yoga postures and rhythms. Students will practice strategies for self-calming and creative thinking as they participate in games that encourage balance, cooperative learning skills, and focus.

ANN ZIMMERMAN SONGWRITING WORKSHOP (2-3 session residency)

Target Grades: 4 - 6

Time: Two, 45-minute sessions (or three shorter sessions)

Capacity: 25, one classroom

Curricular Connections: Science, language arts, music

Room Requirements: Standard classroom, smartboard/whiteboard, electricity

SESSION I: Students will use reading, singing, listening, and creative thinking to discover the vivid imagery and musical elements that make up some familiar songs, then work together to write new words to a common tune.

SESSION II: Students will learn a traditional song, then work in small groups to write new lyrics for the song. Each group performs the new verses with Ann, as the class listens for imagery and

imagination in the writing. After the final session, Ann combines students' new verses and sends them by email to the teacher as a complete outline.

THAD BEACH

UKULELE FUN & FOLLOW UP

Target Grades: 3 - 5 Music Classes

Time: 25 - 50 minutes; single visit or two with Follow Up

Capacity: 30

Curricular Connections: Music, motor skills, social-emotional

Materials: Smartboard, classroom ukuleles

Room Requirements: Standard music classroom with smartboard

Get your ukulele students inspired as Thad shares and demonstrates how he learned his first ukulele song for elementary school show-and-tell. Listen and identify techniques and essential chords and fingerings in the keys of F and C. The Follow Up is hands-on and customized to each class's needs. Students will not play ukes in this session.

UKULELE FUN FOLLOW-UP SESSION: For music classes that have had the first Ukulele Fun session or second-year students. Thad will customize a follow-up session to meet the skill level of students. This time with ukuleles in hand, students will learn Thad's chord progression song and receive individual and group assistance as they explore techniques and expand their skills while they sing, strum, hum and have fun with ukes.

Great things are done
by a series of small things
brought together.

-Vincent van Gogh



THE MUSIC GUERRILLA – DR. MILT ALLEN BANG THE BUCKET!

Target Grades: 1 - 12

Time: 30 - 45 minutes

Capacity: 20 students, one classroom

Curricular Connections: Music, social-emotional and character development (self-awareness, social awareness), motor skills, active participation

Room Requirements: Electricity (buckets and sticks provided)

What happens when you mix an exploration of emotional intelligence, social and emotional learning, an internationally recognized music educator, and the power of making music? Bang the Bucket! Geared toward the level of each grade and class, Bang the Bucket uses bucket drumming as a vehicle to understand and manage our emotions and the emotions of others.

INTRODUCING THE INSTRUMENTS WITH MAESTRO HIL ARIOSO!

Target Grades: 1 - 3

Time: 30-45 minutes

Capacity: 20 students, one classroom

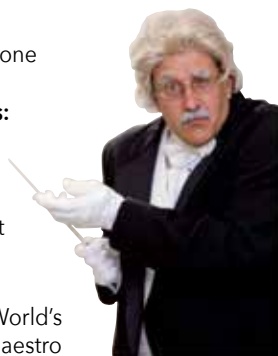
Curricular Connections:

Music, science (sound), social-emotional, and character development

Room Requirements:

Chair, table

None other than the "World's Greatest Conductor: Maestro Hil Arioso" introduces the flute, clarinet, saxophone, trumpet, trombone, and maybe even a little conducting to each class. How do these instruments make their sound? Now, can you recognize their sound?



SALINA STRINGS DAY

February 6-10, 2023



**KANSAS
WESLEYAN**
UNIVERSITY

Kansas Wesleyan University partners with Adele and Derek Stein for a week dedicated to furthering education and strengthening connections amongst the string community in Salina. Dr. Leonardo Rosario of KWU will join the Stein siblings as they give hands-on instruction at four local schools and the Salina Youth Symphony. The week concludes with a collaborative concert between some participating schools and the KWU string orchestra featuring a combined performance.

MOVEMENT MATTERS! PRESENTED BY THE IRON STREET DANCE COMPANY

Visiting Artist

October 27-28, 2022

Target Grades: 1 - 5

Time: 45 minutes

Capacity: 100

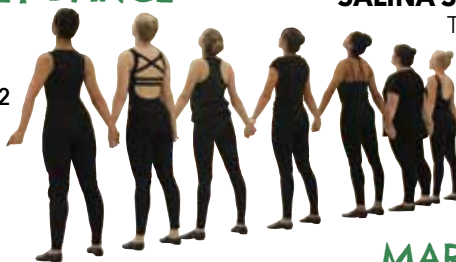
Curricular

Connections: Health

(dance, movement, communities, individual roles in the community), character development, active participation

Room Requirements: Open gym setting or classroom, electricity

In this session, students will learn the importance of staying healthy and how dancing can help accomplish that. This session is interactive! The students will watch two polished dance pieces, hear testimonials from the dancers, and then get up and try some of the dances themselves.



THEATRE SALINA – CENTER FOR THEATRE ARTS

303 E. Iron Avenue

Salina, KS 67401

785-827-6126

<https://salinatheatre.com/>



Theatre Salina is a non-profit educational organization whose purpose is to enrich the lives of people in Salina and the surrounding region by creating a broad range of quality theatrical programs for their entertainment and education, and to provide people of all ages and backgrounds the opportunity to participate in play production and other theatre activities. Upon participating in a live theatre performance, students will have a better understanding of:

• **Critical Thinking and Developing Empathy** - These are achieved by being asked to put themselves in the protagonist's shoes and empathize with the situation.

• **Communication** - Skills are enhanced by reflecting on how the characters have communicated with each other and whether this caused or resolved a conflict. Perhaps the child can think of a better solution themselves.

• **Collaboration and Community** - This is evident when a student sees the show as a final product, they see what is possible when a group of young people works together to create something.



SALINA SYMPHONY

The mission of the Salina Symphony is to enrich lives through artistic music performance and education.

SALINA SYMPHONY – MARIA IOUDENITCH

Visiting Artist

September 23, 2022

Target Grades: 9 - 12

Time: 30-45 minutes

Capacity: 15-400

Curricular Connections: Fine arts, fine arts career pathways, music

Room Requirements:

Classroom, music room

Born in Russia and raised in Kansas City, Missouri, Maria completed her bachelor's at the Curtis Institute of Music and her master's at New England Conservatory. She is currently finishing her studies with Miriam Fried as an Artist Diploma candidate. This year, Maria received first prizes in the Ysaye International Music Competition, the Tibor Varga International Violin Competition, and the Joachim International Competition, as well as numerous other prizes within these competitions, most notably Joachim's Warner Classics prize, with a debut album set to release this summer.



SALINA SYMPHONY – GABRIEL PROKOFIEV

Visiting Artist

November 4, 2022

Target Grades: 6 - 12

Time: 30-45 minutes

Capacity: 15-400

Curricular Connections:

Fine arts, fine arts career pathways, music

Room Requirements:

Classroom, music room, outlets

Over the last decade, Gabriel Prokofiev has become a significant voice in the contemporary classical music of his generation. Uniquely positioned at the intersection of the past and future of contemporary music creation, Gabriel combines a wide breadth of experience in classical and symphonic compositions; scores for film, dance, and opera; and electronic music to create evocative musical journeys that traverse genres and heighten emotions.



(Continued
on next page)



DRAMA, MOVEMENT, & MUSIC

(cont. from
pg. 9)

SALINA YOUTH EDUCATION PROGRAM

Youth Instrumental Audition date: August 27, Grades 4-12, Symphony Rehearsal Hall

Youth Choir Audition date: August 28, Grades 4-8, Symphony Rehearsal Hall

Visit the Youth Education tab at salinasymphony.org for audition details.

The Salina Symphony Youth Education Program offers the opportunity for area youth to participate in professionally directed youth ensembles comprised of students dedicated to fine music making. Members are dedicated to rehearsing weekly throughout the school year to prepare for two formal concerts at the Stiefel Theatre. The programs are designed to supplement the school band/choir/orchestra experience, and students must be enrolled in their school program in order to participate.

The Youth Education Program offers students the opportunity to audition for the following ensembles:

- Youth Symphony—advanced full orchestra
- Youth String Ensemble—intermediate string ensemble
- Youth Wind Ensemble—intermediate wind ensemble
- Preparatory Youth Orchestra—beginning string ensemble



ACOUSTIC EIDOLON

Visiting Dates: October 20-21, 2022

Target Grades: All grades, multi-class performance

Time: 45-50 minutes

Capacity: 20-400 students

Curricular Connections:

Fine Arts, music (performing, responding), world language

Room Requirements:

Standard classroom or gym

Joe Scott and Hannah Alkire will take the students on a musical journey around the world based on their travels abroad and the many cultural influences they experience. Acoustic Eidolon introduces students to the double-necked guitar ("guitjo") and cello during their interactive educational program. Hannah, fluent in 3 languages including Spanish, meaningfully weaves in an occasional song in another language, explaining how lyrics in different languages can also bring different flavors and rhythms to songs. A community performance will follow the school visits.



AMADO AND KAREN'S ANDEAN MUSIC ODYSSEY

Sharon Benson Visiting Artists

November 7-8, 2022

ANDEAN MUSIC ODYSSEY

(Assembly)

Target Grades: 2 - 12

Time: 45 minutes

Capacity: 500

Curricular Connections: Geography, history, music, movement, world language

Room Requirements: Auditorium or gym with electricity

An interactive musical voyage through the Andes Mountains. Students learn about the relationship music has with nature and with each other, through the diverse instruments, rituals, and culture of the region. The artist encourages music and musicianship as a vehicle for mindfulness, ecology, self-acceptance, and community.

JUNKYARD ORCHESTRA

(Classroom Workshop)

Target Grades: 3 - 12

Time: 45 minutes

Capacity: 25

Curricular Connections: Geography, history, music, movement, science (physics, ecology), character development

Room Requirements: auditorium or gym with electricity

Materials: Grades 3 to 6 will need a disposable water bottle, scissors, tape

Students will combine elements of physics and art to make their own instruments from disposable materials and found objects, and apply music standards by learning the techniques of how to play them. Inspiring creativity, self-esteem, and positive classroom dynamics, while developing a respect for craftsmanship and ecology!

EDMUND AND RUDOLPH STEIN

Visiting Artists

January 24-25, 2023

Target Grades: 6 - 12

Time: 45 minutes

Capacity: 15-100

Curricular Connections:

Fine arts, fine arts career pathways, music

Room Requirements: Music room, gym, or auditorium

Materials: string instruments

Students will learn playing techniques, rehearsal tips, listening strategies, and more through this guest clinician session available for all stages of playing. The Stein brothers are professional musicians with careers that began in the Salina community, studying under their father, Eric Stein. Both have gone on to play in acclaimed symphonies, chamber groups, and orchestras that have performed worldwide and are excited to share knowledge gained through their experiences.



"Together we are unstoppable! So we gotta stop stopping each other from being unstoppable."
—Kid President

SALINA SUMMER STRINGS:

June 18-24, 2023



Salina Summer Strings
at Kansas Wesleyan University

A week-long opportunity available to string students to study chamber music on a university campus with professional-level instructors. Edmund and Rudolph Stein return to Salina to partner with Kansas Wesleyan University to instruct students through masterclasses, rehearsal coachings, and other instructional clinics. Students will develop skills in leadership, interpersonal skills, critical thinking, and incorporating their soloistic playing into an ensemble setting. For more information, please visit salinasummerstrings.com.

SOCIAL STUDIES

ANN ZIMMERMAN KANSAS SONGS CONCERT

Target Grades: K - 8
Time: 30 - 45 minutes
Capacity: 100

Curricular Connections: Math, history, social studies, science, English language arts (connections according to grade level)
Room Requirements: Standard classroom or gym with students seated on floor or at desks
Students will join in discussion and singing about Kansas, its history, climate, biology, and culture, past and present. An advanced version is available for middle-school classes.

SONGS OF THE AMERICAN REVOLUTIONARY WAR

Target Grade: 5
Time: 60 minutes
Capacity: 100

Curricular Connections: English language arts, math, history, social studies, science, music
Materials: Smartboard/whiteboard, electricity
Room Requirements: Standard classroom or gym with students seated on floor or at desks
Students will discuss events and people of the American Revolutionary War, visualize the timeline of the war and sing songs that Americans and others sang.

THAD BEACH LONGITUDE AND LATITUDE WITH A GEO-MUSICAL ATTITUDE!

Target Grades: 4 - 6
Time: 40 - 50 minutes
Capacity: 30

Curricular Connections: Geography (maps, the globe, U.S. regions), math (graphing and plotting), music
Materials: Copies of handout
Room Requirements: Classroom, students seated on floor, large open floor space to make grid, smartboard/whiteboard, markers
Take an exciting, highly participatory global journey as you develop or reinforce geography skills and vocabulary necessary to plot your own longitude and latitude



photo by Scott Seirer

"We do not learn
from experience...
we learn from
reflecting on
experience."
—John Dewey

coordinates and identify absolute locations of selected Kansas and U.S. cities. Powered by Thad's imagination, sense of humor, Ukulele, Harmonica, and Bucket Bass!

EXPLORING THE KANSAS DUST BOWL

Target Grades: 3 - 4; 7

Time: 45 minutes

Capacity: 30, one classroom

Curricular Connections: U.S. History (the Dustbowl and the Great Depression, agriculture), geography, science, music

Room Requirements: Classroom, smartboard/whiteboard, markers

GRADES 3-4: Learn how children helped their farming families survive the Dust Bowl.

GRADE 7: Through multimedia images, primary source interviews and songs, students will be introduced to and discuss technology, agricultural practices and environmental causes and effects of the Dust Bowl. Students will compare and contrast the 1930s with today.

POSTCARDS FROM THE DUST BOWL (Four-Session Residency)

Target Grade: 7

Time: Four, 45-minute sessions

Capacity: 30

Curricular Connections: Social studies (Kansas, U.S. regions, agriculture, the Dust Bowl, and the Great Depression), English language arts (narrative writing), visual arts (sketching, drawing), music

Materials: Copies of handout index cards, cardstock, copy paper

Room Requirements: Standard classroom, smartboard/whiteboard, markers

A residency that includes Thad's Dust Bowl Songs, multi-media presentations, creative writing, visual art, and musical experiences as students learn about the Dust Bowl and Great Depression. Students will create personas and express their characters' emotions and situations, describing Dust Bowl events and creating Post Card Sketches.



THE SMOKY HILL MUSEUM

211 W. Iron Avenue • P.O. Box 101
Salina, KS 67402-0101

www.smokyhillmuseum.org

Nona Miller, Curator of Education

785-833-8023 • nona.miller@salina.org

It's history unexpected at the Smoky Hill Museum! We're an active and responsive teacher resource, offering hands-on, minds-on history. Visit *The Curiosity Shop*, with five areas of engagement (Kansas Weather, World of Radio, Town Building, Tots and The Dirty Thirties). Other offerings include:

- Dynamic, free tours
- Free educational lending library
- Inspiration for artists and writers
- Kansas Days activities (late January)
- Puzzles and research helps at smokyhillmuseum.org/programs-and-tours/teacher_resource_area/
- Engaging exhibits in the Central Gallery
- Free First Thursdays (great for extra credit)
- 7th Grade Cultural Crawl

LESSONS/ACTIVITIES: To learn more about these lessons, please call.

- Cowboys: Grades 1 - 2 (A traveling trunk)
- Pioneer Tool Hunt: Grades K - 4
- Pack Your Wagon: Grades 3 - 6
- Butter Churning: Grades K - 4
- WWII: Pack Your Packard: Grades 4 - 7
- Buffalo: Adaptable
- Native Americans: Grades 4 and up
- Indian Burial Pit: Grades 9 and up

NEW ACTIVITIES: If you don't see what you're looking for or if you have an idea, please contact the Curator of Education. New activities may be added throughout the year.



PUBLIC ART IN SALINA

Target Grades: 3 - 12

Time: 45 minutes

Capacity: 25, one classroom

Curriculum Connections: Healthy communities, social-emotional, fine arts career pathways, fine arts, visual arts

Room Requirements: Access to a projector for visual presentation

Salina Arts & Humanities staff discuss public art in Salina, KS, including the City of Salina's permanent collection, public funding, and other art in public places. Students will be prompted to think about murals, monuments, memorials, public performance art, and how each relates to their lives.



DOODLE MURAL COLLABORATION - DARREN MORAWITZ

SALINA ART CENTER

Target Grades: 6 - 12

Time: 45 minutes

Capacity: 25 students, one classroom

Curricular Connections: Social-emotional & character development (decision making, problem-solving, goal setting, social

awareness, interpersonal skills), fine art (creative thinking, scale, creating, responding, connecting)

Room Requirements: classroom, students seated, wall space

Materials: Computer paper, markers, tape
Students will explore idea generation and creative problem-solving through a collaborative mural project in which they will be guided to create a doodle grid to scale a prepared image. The class will get to keep their work of art as well as take away lessons in collaboration, communication, problem-solving, creative thinking, scale, and how many small and unique pieces create a whole.

SALINA ART CENTER

242 S Santa Fe Avenue • Salina, KS 67401

(785) 827-1431 • www.salinaartcenter.org

SALINAartcenter

EDUCATIONAL PROGRAMMING

For over 30 years, the Salina Art Center (SAC) has produced educational programs centered on its mission, to create exchanges among art, artists, and audiences that reveal life.

The Salina Art Center invites you to learn, experience, and create! The Art Center offers a variety of opportunities for learners of all ages to connect with contemporary art and artists. Develop new skills, explore different mediums, participate, and find your creative voice. Programming includes workshops, the ARTery, artist talks, tours, and more. Personalized tours and group activities are also available.

For a comprehensive list of all educational opportunities, including after-school classes and summer sessions, visit www.salinaartcenter.org or call 785-827-1431.

VISUAL ARTS

ALL CLASSES are held at the SAC Warehouse and Education Studio at 149 S. 4th Street.



THAD BEACH

THE PUMPKIN LIFE CYCLE

Target Grades: Pre-K - 3

Time: 25 - 45 minutes

Capacity: 30

Curricular

Connections: Science (animals, organisms, and ecosystems; plants and interdependent relationships), music, social-emotional

Room Requirements: Standard classroom with smartboard (with students seated on floor)

Thad's music, movement, creative dramatizations, and collaborations explore the pumpkin life cycle. Students will build vocabulary, describe and sequence events, and practice problem-solving skills as they explore grade-appropriate concepts such as soil, water, sunshine, photosynthesis, and pollination. Meet Pumpkin Jack the Dancing Lumberjack and sing along with the Pumpkin



Patch Bucket Bass! Listening and speaking, following directions, social skill practice, creative dramatization, storytelling, and music are integrated throughout.

THE FROG LIFE CYCLE

Target Grades: Pre-K - 3

Time: 25 - 45 minutes

Capacity: 30

Curricular Connections: Science (animals, organisms, and ecosystems; plants and interdependent relationships) music, social-emotional

Room Requirements: Standard classroom with smartboard (with students seated on floor)

Welcome to the Frog Pond for an engaging musical exploration of life cycle vocabulary through creative dramatizations and classroom collaborations. We'll work together to explore the stages and sequences

SCIENCE

of metamorphism, predator and prey relationships, habitats, camouflage, and unique amphibian adaptations for survival. Scientific complexity increases with grade level. Listening and speaking, following directions, social skill practice, storytelling, and music are integrated throughout.

DOWN IN THE SWAMP

Target Grades: 3 - 5

Time: 25 - 45 minutes

Capacity: 30

Curricular Connections: Science (animals, organisms, and ecosystems; plants and interdependent relationships), geography (maps, U.S. regions), music

Room Requirements: Standard classroom with smartboard/whiteboard

Head into the swamps of North America! Build your scientific classification skills while encountering and identifying mammals, reptiles, amphibians, avians, insects, crustaceans, Spanish moss, cypress trees, and even carnivorous plants. We'll turn your room into a lively, singing swamp, and then you'll sketch your own swamp scene. Vocabulary and content are adapted to specific grade levels.

THE SCIENCE OF SOUND

Target Grades: 3 - 5

Time: 25 - 45 minutes

Capacity: 30

Curricular Connections: Science (matter and energy, matter and forces, structural properties of matter, waves, light, and sound), math, music

Room Requirements: Standard classroom with smartboard (with students seated on floor)

Explore Thad's fun and unique instruments! Compare and contrast, make observations and predictions, and understand what makes instruments sound like they do. We'll sing, laugh, learn, collaborate, and problem-solve as we encounter volume, density, pitch, kinetic and potential energy, soundwaves, vibrations, and resonating chambers.

Vocabulary and content are adapted to specific grade levels.

THE AMAZING MONARCH MIGRATION

Target Grades: 4 - 6

Time: 45 minutes

Capacity: 30

Curricular Connections: Science (animals, organisms, and ecosystems, plants, interdependent relationships), geography (U.S. regions), music, social-emotional

Materials: copies of handout

Room Requirements: Standard classroom with smartboard

Follow the migration journey from the wintering grounds in the mountains of Mexico, north to Kansas, and onward to the Prairie Provinces of Canada! Explore the importance of milkweed in the monarch butterfly life cycle, adaptations, predators, climatic elements, and human interactions that affect monarch populations. Vocabulary and content are

adapted to specific grade levels.

• Migrations in fall and spring - *Get your request in early for the September Monarch Migration.



FRIENDS OF THE RIVER FOUNDATION

FRIENDS OF THE RIVER FOUNDATION

MYSTERY ON THE RIVER - Spring Semester 2023

Target Grades: Pre-K; K - 2

Time: 45 minutes

Capacity: 100

Curricular Connections: Science, social studies, social-emotional, and character development

Room Requirements: Classroom or gym

Experience and participate in an adventure as we learn about the Smoky Hill River through puppetry and storytelling. Join Bella Beaver and the gang as they meet a new face and figure out if she is friend or foe; then continue the adventure with a "who dun it" mystery. These stories introduce the defenses of animals along the river and follow clues to track something to the source.

FRIENDS OF THE RIVER FOUNDATION

159 S. 4th Street • P.O. Box 953

Salina, KS 67402

785-493-8491

janea@smokyhillriver.org.

The Friends of the River Foundation strives to restore the natural channel of the Smoky Hill River to its role as an integral part of the aesthetic, recreational, and economic life of Salina.

Executive Director Jane Anderson will visit your class with an overview and update about the Smoky Hill River Renewal Project. This project is exciting for all the aspects it affects: recreation, environmental renewal, and redevelopment for the core of Salina. Presentations can be tailored to any age group. The Friends of the River Foundation offers volunteer opportunities to children under 18, if accompanied by an adult. Clean-ups will occur on the Smoky Hill River from 8:00 am to noon.

All tools and materials are provided for your students to be able to participate.

• Saturday, October 8, 2022 Fall Fix-Up

• Saturday, April 29, 2023 Spring Spruce-Up
Volunteering on these days gives you the opportunity to make a difference in your river and community.



ROLLING HILLS ZOO

325 N. Hedville Road • Salina, KS 67401

www.rollinghillszoo.org

785-827-9488

ZOO TO YOU

Can't bring your class out to the Zoo? Then why not let the Zoo come to you with jam-packed FUN! These interactive wildlife-themed lessons will include touchable bio-facts, an introduction to live animal ambassadors, and a conservation message. Each Zoo To You class is adaptable to any age group. While there is no minimum or maximum number of students, the ideal class size is 35 people or less. Pricing is based on the location's distance from the Zoo.

DISCOVERY CLASS

Have an extra-special adventure at the Rolling Hills Zoo! These interactive classes allow you to choose from one of the many topics available for ages K-8. All classes include an interactive lesson and hands-on experience handling such things as skins, skulls, and teeth. Students will also get to meet live animal ambassadors. Classes are 45 minutes long with a suggested participation size of 35 or less. Give us a call to learn more about our Discovery Class options and pricing.

ADDITIONAL (SCHOOL BASED) PROGRAMS:

• YOU AT THE ZOO

This is a condensed version of the Discovery Class at Rolling Hills Zoo. Students will meet live animals and a selected wildlife theme will be explored. These classes are 30 minutes long and are a great addition to school field trips. Preferred class size is 25 or less. Give us a call to learn more about our You at the Zoo themes and activities for your class(es) and pricing.

• PERSONAL GUIDED TOUR

These tours are 1 hour and 30 minutes long and will be guided by an experienced zoo staff member. During the tour, three stops will be made at Apes, Rhinos, and Giraffes - where the tour guide will speak at length about conservation, animal facts, and their personal histories. Maximum group size for each tour is 35. Give us a call for pricing information and to schedule your tour.

ENGLISH LANGUAGE ARTS

LORI BRACK

THREE POEMS

Target Grades: 6 - 12

Time: 90 minutes

Capacity: 25

Curricular Connections: Reading:

literature (craft and structure, key ideas and details), writing (language in writing), social-emotional and character development

Materials: Pencil, paper, copied handouts

Room Requirements: Standard classroom with whiteboard

Students will engage with poetry by writers, including Kansas poets, through reading, discussion, and writing expressively. Vocal readings will be partnered with questions designed for honest sharing and discussion of figurative language, word choice, analogies and allusions, points of view, and cultural experiences. Student writers will draw from words, lines, titles, images, or ideas from the poems to begin writing their own work with an opportunity to share with others.

• This presentation is in collaboration with the Poetry Series April 2023.



A fun, collaborative way to work together and build phonological awareness and literacy skills.

RADICAL RHYME TIME

Target Grades: 2 - 3

Time: 25 - 45 minutes

Capacity: 30

Curricular Connections: English language arts, music

Materials: Copied handouts, markers

Room Requirements: Standard classroom with students seated on floor; smartboard/whiteboard

Students learn Thad's highly successful "Working a Word" speed rhyming strategy to brainstorm rhyme words, create lyric phrases, use adjectives, verbs, and spice it all up with alliteration. Students work individually and collaborate as a group, then celebrate by performing their creations with Thad's "Band in a Bucket" instruments.

THAD BEACH

PHONOLOGICAL AWARENESS WITH MR. R

Target Grades: Pre-K

Time: 30 minutes

Capacity: 15-20

Curricular Connections: Social-emotional, English language arts, music

Materials: Copied handouts, markers

Room Requirements: Standard classroom (with students seated on floor)

The class participates in activities that help build phonological awareness, pre-literacy skills, and encourage expressing emotions and feelings. They meet Mr. R (the dancing lumberjack), welcome him to the classroom, learn what Mr. R likes to do and collaborate to create an imaginary musical journey with music, songs, chants, and creative props.

LITTLE RED READING WAGON

Target Grades: K - 2

Time: 25 - 45 minutes

Capacity: 30

Curricular Connections: English language arts, music, motor skills, listening and speaking

Room Requirements: Standard classroom with smartboard

Participatory music experiences to explore letters and sounds, the alphabet, alliteration, and rhyme. The class brainstorms and creates songs about colors, animals, and food while singing and playing along on homemade instruments.

PRISCILLA HOWE

Visiting Artist

December 5 - 8, 2022

February 1 - 3, 2023

STORYTELLER'S CHOICE

Target Grades: All grades, tailored to the audience

Time: 30 - 45 minutes

Capacity: 200

Curricular Connections: Prediction sequencing, writing, listening, language arts, social studies, character education

Room Requirements: Classroom or gym with students seated on floor or at desks

Whether she's telling world folktales, stories from books, or her own stories with a twist, Priscilla Howe's interactive storytelling performances engage the audience completely.



Upper elementary and middle school students fall into a story-listening trance, while younger kinesthetic learners join in on hand motions, songs, and chants. Priscilla's hand puppets come along for the ride with the younger listeners. Students often leave the session repeating lines from the stories or acting them out--and teachers report hearing the stories from students for the next week.

STORYTELLING, STORY WRITING WORKSHOP

Target Grades: 4 - 6

Time: 45 minutes

Capacity: 30

Curricular Connections: Prediction sequencing, writing, listening, English language arts

Materials: Pencil, paper

Room Requirements: Standard classroom (with students seated at desks)

Storytelling is a perfect lead-in to creative writing. In this highly participatory workshop, storyteller Priscilla Howe introduces concepts such as the difference between oral and written stories, story structure, and backstory. With an open and good-natured attitude, she guides the students in writing exercises to flex and stretch their creative muscles.

KINDNESS, COMPASSION, AND COURAGE: STORIES FOR CHARACTER EDUCATION

Target Grades: K - 6

Time: 30 - 45 minutes

Capacity: 200

Curricular Connections: Reading, language arts, character education, social-emotional and character development

Room Requirements: Classroom or gym

These stories highlight character traits such as kindness, courage, respect, and more. After the stories, Priscilla invites listeners to reflect on the traits and how those traits might manifest in their own lives.

HUASCAR MEDINA, POET LAUREATE OF KANSAS (2019-2022)

Visiting Artist

March 1-2, 2023

THE POETIC LENS

Target Grades: 3 - 8

Time: 60 minutes

Capacity: 21-35

Curricular Connections: Reading: literature, writing (language in writing), social-emotional

Materials: Pencil, paper, copied handouts

Room Requirements: Standard classroom with whiteboard

Poetry provides us with a lens of perspective we can apply microscopically and telescopically to the world around and within us. In this creative writing workshop, poets will calibrate their lenses and focus on their view of the world, culminating in the production of 3 poems.



TRUTH TO EMPATHY

Target Grades: 8 - 12

Time: 60-90 minutes

Capacity: 35

Curricular Connections: Speaking and listening, reading: informational, social-emotional and character development

Materials: pencil & paper

Room Requirements: Standard classroom with whiteboard

Writers will explore voice, authenticity, truth, and empathy in an emotionally intense guided writing exercise geared towards self-examination, humility, vulnerability and compassion for self and others. We will discuss the separation between author, poetic voice, and audience. Be prepared to be open, listen deeply, and speak freely.



**SALINA
PUBLIC
LIBRARY**

SALINA PUBLIC LIBRARY

301 W. Elm St.

Salina, KS 67401

785-825-4624

<https://salinapubliclibrary.org/>

EDUCATOR CARDS

Salina Public Library offers a library card specifically for educators that allows them to supplement their curriculum with an abundant, ever-changing supply of books at varying reading levels. Teachers can create temporary classroom collections, check out content, and reserve multiple copies from the library's collection. The cardholder will not incur overdue fines.

THE LIBRARY'S COLLECTION

The library has a dynamic collection of print and digital books, music, movies, and TV series, as well as video games, hotspots, research databases, and online learning resources. The collection covers a wide range of topics from literature to history to science to art. Purchasing suggestions are welcome, and staff are happy to help with book lists.

KANOPI

Salina Public Library now offers a growing selection of nearly 30,000 thought-provoking and entertaining movies, documentaries, and series from Kanopy, including videos to enhance your curricula in all academic subject areas. These videos are absolutely free to anyone with a public library card. Visit salinapubliclibrary.org/kanopy to get started.

TOURS & VISITS

Tours or instruction that highlight the library's print and electronic resources are available to groups or individuals. Staff also are available to visit schools to share information about library resources.



HOME OF THE CROSSROADS CAR EXPERIENCE
KKOA MUSEUM & HALL OF FAME

THE GARAGE

134 S Fourth Street • thegaragesalina.org

Visit the new 40,000 sq. ft. garage in downtown Salina to explore The Garage's rotating collection of artifacts and learn stories of American innovation. Explore. Imagine. Create.



**KANSAS
WESLEYAN**
UNIVERSITY

KANSAS WESLEYAN UNIVERSITY

100 E. Claflin Ave. • Salina, KS 67401

785-827-5541 • kwu.edu

Barbara Marshall Nickell, Chair of the Division of Fine Arts
bmarsh@kwu.edu

Through educational outreach and seasonal programming, the KWU Division of Fine Arts shares with the Salina community a passion for learning and the responsibility of knowledge. The Debate and Forensics squad hosts a high school Debate Clinic on campus every fall, State Rules meetings for high school Debate, Speech, and Drama Faculty, camps in the summer to teach fundamentals of Debate, and the State High School Drama and Forensics Festival. The competitive KWU Debate/Forensics squad welcomes the opportunity to set up workshops with individual schools.

The Theatre Arts Program in the Department of Communication Studies and Theatre Arts offers concentrations in Theatre and Music Theatre. Students and professors are active participants in the larger theatre community, not only in Salina, but in other cities and various organizations in Kansas. At the Kansas Thespians Conferences, professors offer workshops to high school students in acting, directing, and mock auditions. Collaborations have also been formed with the Theatre Salina, as well as with local high schools. In addition, exchanging props, skills, and information across the community has helped create a support system.

The Art and Design Department connects with the community through free gallery exhibits and discussions. It also provides professional art, design, and photography services.

Students have provided logos, business cards, and flyers for area businesses and individuals.

Vocal and

Instrumental Music faculty and students provide KWU

Music Learning Day, jazz and band festivals, and outreach concerts for care homes and area churches. In addition, vocal, band, orchestra, and jazz concerts are free to the public.

All areas of Fine Arts at KWU have enjoyed hosting interns from area high schools.

Contact the Chair of the Division of Fine Arts, Barbara Marshall Nickell, bmarsh@kwu.edu for more information.



COMMUNITY CULTURAL OFFERINGS



STIEFEL THEATRE FOR THE PERFORMING ARTS

151 S. Santa Fe • 785-827-1998 • stiefeltheatre.org
M-F, 12pm - 5pm or three hours before weekend show times.

Contact: Jane Gates
jgates@stiefeltheatre.org

The Stiefel Theatre presents over 40 concerts annually, most of which are touring nationally and internationally. The Stiefel is committed to celebrating many genres, and works to provide a platform for diverse music and entertainment that is welcoming to all. The Mike Finnigan School of Music at the Stiefel offers group music classes in guitar, piano, and voice. The Salina Symphony also makes their home at the Stiefel Theatre. For more information, please go to: www.stiefeltheatre.org.



SALINA ARTS & HUMANITIES

Contact Salina Arts & Humanities
Phone: 785-309-5770
Email: sah@salina.org
Website: <http://salinaarts.org/>

CULTURAL COMMUNITY WEBSITE -

<http://salinaarts.org/>
The SAH website features a link to the Salina Arts & Entertainment Calendar (salinaae.com), a gallery of local public art, and an extensive list of area arts and cultural organizations, galleries, and other arts resources.

HORIZONS GRANTS

The Horizons Grants Program is a project of The Salina Arts & Humanities Foundation, offering support to local cultural and service agencies and artists through a variety of grant categories. Grants offered are:

- Lana Jordan Developing Artist Grants
- Organizational Project Grants
- Enrichment Grants

Grants are available to those residing in Saline County for at least one year and to non-profit agencies. Guidelines and applications are available online.

CREATIVE CONNECTIONS

A biweekly e-newsletter dedicated to creatives featuring exhibition, performance, employment, professional development, and cultural opportunities.

SALINA ARTS & HUMANITIES RESOURCES

SMOKY HILL RIVER FESTIVAL

Salina's flagship arts celebration brings 60,000 people to Oakdale Park each June. The Festival features national, regional, local, and student performers, a highly ranked Fine Art and Craft Show, Artyopolis, regional food, and more for all ages. Volunteers of all ages are welcome to help produce this vibrant and unique community event. The Smoky Hill River Festival is a project of Salina Arts & Humanities.

June 8-11, 2023

SPRING POETRY SERIES - Tuesdays in April

The Spring Poetry Series celebrates National Poetry Month by presenting poets of national, regional, and emerging status. Scholarships are available through SAH to facilitate student attendance. Poets are available for classroom visits throughout the month of April.

COMMUNITY PROGRAMS AND SERVICES

SAH provides a variety of services to the general community, including arts advocacy, assistance in locating artists or resources, and in its role as the arts and cultural department of the City of Salina.

THE CULTURAL ROUNDTABLE

The Cultural Roundtable is a consortium of local museums, libraries, galleries, educational institutions, performance, and service organizations. They collaborate to schedule and promote programs, exhibits, and activities of interest to Salina residents and visitors.

"I've learned that
people will forget
what you said, people
will forget what you
did, but people will
never forget how you
made them feel."
-Maya Angelou



COMMUNITY ART AND DESIGN (CAD) COMMITTEE

Salina Arts & Humanities (SAH) helps bring public art to Salina. Alongside SAH, the CAD Committee plays a vital role in the process of creating Public Art. Its mayoral-appointed membership consists of at-large community members as well as others who bring specific art experience and knowledge to the group.

Creating a piece of public art requires teamwork. On each project, SAH works with the CAD Committee and a Site Committee comprised of a cross-section of community members and stakeholders.

The creation of this advisory group was initiated by a citizen-driven desire to create a public art program. CAD assists SAH staff in facilitating the program and implementing the City's Community Art and Design Policy for all public artworks installed on public property. CAD also supports community education, project awareness, marketing of the program, and resource assistance.

PUBLIC ART IS MEANT TO BE:

- Rewarding! It provides an opportunity for people to see the world around them in a new way.
- Diverse! It can include murals, sculptures, memorials, and more.
- Transformative! It improves the quality of life and inspires conversation.
- Reflective! Great public art reflects the community for which it is created.

The next time you look at a piece of Salina's public art, ask yourself the following questions:

- How does public art make you feel when you see it?
- What aspects of the artwork reflect either the place or the people of Salina?
- If you were to create a piece of public art for Salina, what would it be? Where would you put it and why?

SAH staff welcomes the opportunity to present a program highlighting the importance of public art and the inclusive process leading to its creation in Salina and regionally. To schedule, contact sah@salina.org or call 785-309-5770.

PUBLIC ART IN SALINA, KS

MURAL REVEAL!

YOU'VE SEEN THE TEXTURES AND COLORS OF THE MURALS THROUGHOUT THE GUIDE - NOW SEE THEM IN THEIR ENTIRETY. EACH OF THESE MURALS WERE PAINTED IN MAY 2022 AND ARE ON DISPLAY IN SALINA ON THE ALLEY WALLS AT 140 S. 5TH STREET. VISIT ARTWORK ALLEY IN PERSON TOO!



JEREMY FIELDS

A mural with Field's youngest daughter as the subject. The artist stated, "The inspiration was from a photo of her dancing and singing, just being herself without expectation or limitation."

BRADY SCOTT

A mural consisting of Kansas floral and fauna elements in Scott's unique style draws inspiration from wildlife, people, history, and the timeless prairie landscape.



KAMELA EATON

Eaton uses vibrant, saturated colors in her design based on vintage Paper Moon photos. The mural depicts a young girl with her dog in the smiling moon surrounded by a night sky, stars, and clouds framed by swag curtains on each end.





PRESENTED BY
**SALINA ARTS
& HUMANITIES**

a department of the City of Salina
in partnership with USD 305



**SALINA
ARTS**
& HUMANITIES



SALINA
Public Schools

Content written by Sarah Keck, SAH staff, teaching artists, and community cultural agencies.

Design and printing by Consolidated Printing.

SALINA ARTS & HUMANITIES

211 W. Iron (Second Floor)

PO Box 2181 • Salina, KS 67402-2181

Phone 785-309-5770 • Fax 785-826-7444

Email: sah@salina.org • salinaarts.org

STAFF:

Brad Anderson • Executive Director

Sarah Keck • Arts Education Coordinator

Anna Pauscher Morawitz • Operations & Development Manager

Amanda Morris • Office Administrator

Susan Eberwein • Program Assistant

Glenda Johnson • Accounting Technician